

Feature	Latitude	Longitude	Cowardin Class	Estimated Amount of Aquatic Resource in Project Study Area (acres)	Class of Aquatic Resource
<b>Wetlands</b>					
Wetland A	33.325598	-80.556297	PFO	3.94	Section 404
Wetland B	33.323945	-80.551858	PFO	4.06	Section 404
Wetland C	33.322812	-80.553262	PEM	0.06	Section 404
Wetland D	33.319585	-80.551879	PSS	5.28	Section 404
Wetland E	33.326338	-80.543186	PFO	0.17	Section 404
Wetland F	33.324849	-80.544106	PFO	0.08	Section 404
Wetland H1	33.20166	-80.544245	PFO	8.81	Section 404
Wetland H2	33.320524	-80.545503	PFO	0.91	Section 404
Wetland J	33.313839	-80.542347	PSS	0.48	Section 404
Wetland K	33.314084	-80.542921	PEM	2.14	Section 404
Wetland L	33.311953	-80.541074	PEM	0.09	Section 404
Wetland M1	33.311576	-80.540341	PSS	1.69	Section 404
Wetland M2	33.309604	-80.538493	PSS	1.43	Section 404
Wetland N	33.307165	-80.536015	PEM	0.12	Section 404
Wetland O	33.314272	-80.548354	PSS	1.37	Section 404
Wetland R	33.326587	-80.541356	PFO	0.54	Section 404
Wetland S	33.325263	-80.542264	PFO	0.45	Section 404
Wetland T1	33.325774	-80.552614	PEM	0.14	Section 404
Wetland T2	33.32634	-80.554047	PSS	1.10	Section 404
Wetland U	33.297476	-80.556172	PFO	0.87	Section 404
Wetland V	33.302024	-80.555111	PFO	0.22	Section 404
Wetland X1	33.318789	-80.545926	PFO	1.16	Section 404
Wetland X2	33.316856	-80.545525	PFO	0.64	Section 404
Wetland W	33.32164	-80.552117	PSS	0.13	Section 404
Wetland Y	33.317086	-80.544645	PFO	0.88	Section 404
<b>Wetlands</b>			<b>Total</b>	<b>36.76 Acres</b>	

Feature	Latitude	Longitude	Cowardin Class	Estimated Amount of Aquatic Resource in Project Study Area	Class of Aquatic Resource
Streams					
Non-wetlands waters 1	33.317945	-80.544561	Riverine	0.53 Acres / 1,393.22 LF	Section 404
<b>Non-wetlands Waters</b>			<b>Total</b>	<b>0.53 acres / 1,393.22 LF</b>	

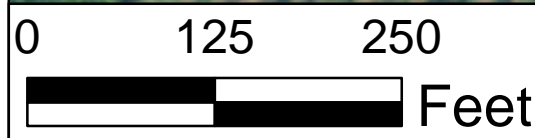
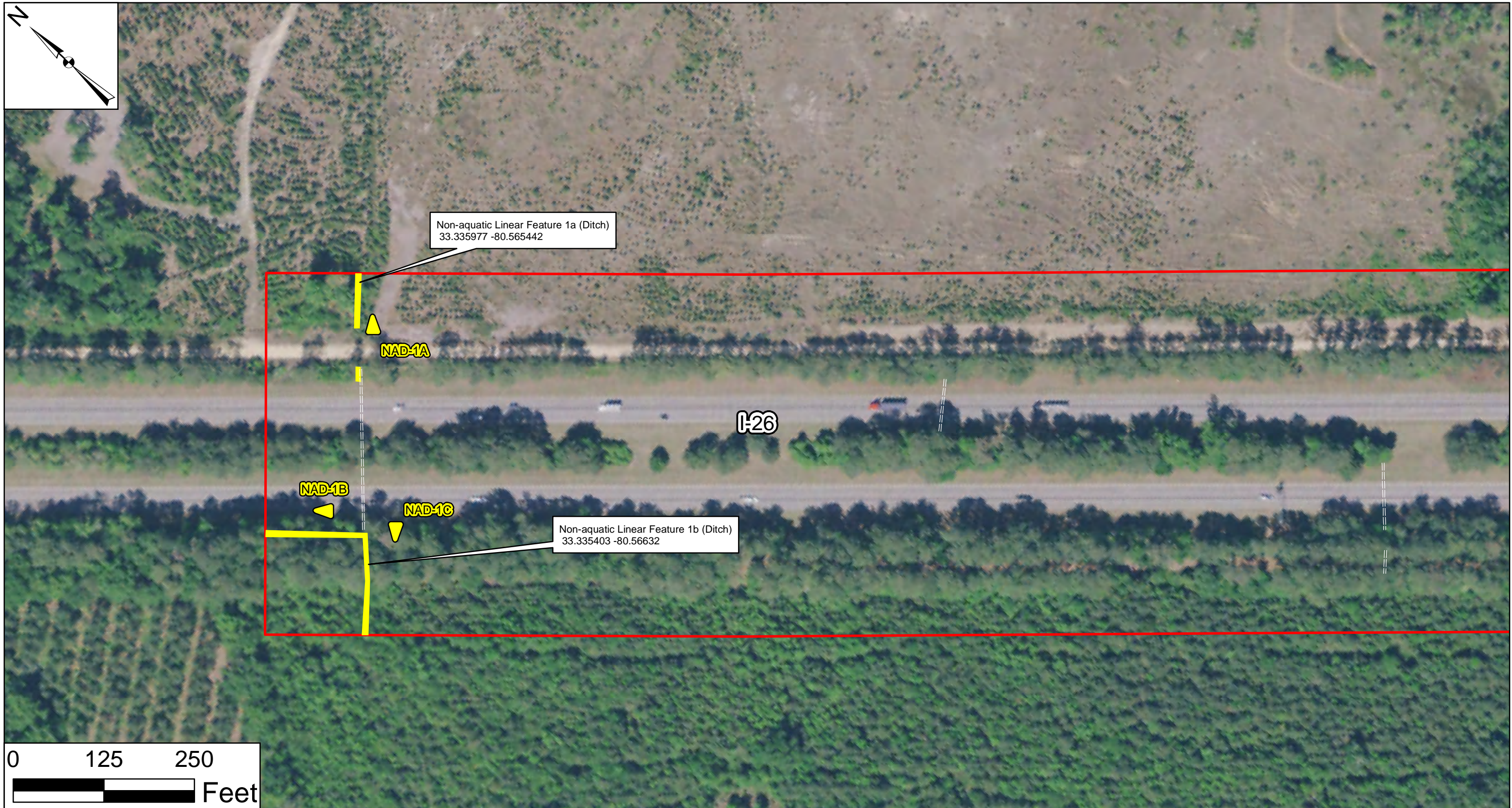
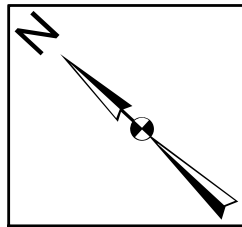
Feature	Latitude	Longitude	Cowardin Class	Estimated Amount of Aquatic Resource in Project Study Area (acres)	Class of Aquatic Resource
Non-wetland waters (Open Water)					
Non-wetlands waters 2 (Pond)	33.332062	-80.561006	PUBHx	0.52	Section 404
Non-wetlands waters 3 (Pond)	33.323645	-80.555180	PUBHx	2.39	Section 404
Non-wetlands waters 3 (Pond)	33.323300	-80.553627	PUBHx	0.48	Section 404
Non-wetlands waters 3 (Pond)	33.322237	-80.552631	PUBHx	0.75	Section 404
Non-wetlands waters 3 (Pond)	33.321271	-80.552311	PUBHx	0.03	Section 404
Non-wetlands waters 4 (Pond)	33.317260	-80.551847	PUBHx	1.28	Section 404
Non-wetlands waters 5 (Pond)	33.314564	-80.551988	PUBHx	0.98	Section 404
Non-wetlands waters 6 (Pond)	33.313089	-80.552646	PUBHx	0.22	Section 404
Non-wetlands waters 7(Pond)	33.312383	-80.553136	PUBHx	0.24	Section 404
	<b>Non-wetlands waters (Pond)</b>		<b>Total</b>	<b>6.89 Acres</b>	

Feature	Latitude	Longitude	Cowardin Class	Estimated Amount of Aquatic Resource in Project Study Area (acres)	Class of Aquatic Resource
Non-aquatic Resource (Pond)					
Non-aquatic Resource 8 (Pond)	33.314543	-80.549201	PUBHx	3.26	Non-Section 404
Non-aquatic Resource 9 (Pond)	33.315054	-80.546936	PUBHx	2.13	Non-Section 404
Non-aquatic Resource 10 (Pond)	33.308856	-80.554784	PUBHx	0.07	Non-Section 404
<b>Non-aquatic Resource</b>			<b>Total</b>	<b>5.46 Acres</b>	



Feature	Latitude	Longitude	Class of Aquatic Resource
Non-aquatic Linear Feature 1a (Ditch)	33.335977	-80.565442	Non-Section 404
Non-aquatic Linear Feature 1b (Ditch)	33.335403	-80.56632	Non-Section 404
Non-aquatic Linear Feature 2 (Ditch)	33.331083	-80.560884	Non-Section 404
Non-aquatic Linear Feature 3 (Ditch)	33.31962	-80.551231	Non-Section 404
Non-aquatic Linear Feature 4(Ditch)	33.315501	-80.551601	Non-Section 404
Non-aquatic Linear Feature 5 (Ditch)	33.310871	-80.553927	Non-Section 404
Non-aquatic Linear Feature 6 (Ditch)	33.309251	-80.554574	Non-Section 404
Non-aquatic Linear Feature 7 (Ditch)	33.312769	-80.544023	Non-Section 404
Non-aquatic Linear Feature 8 (Ditch)	33.320018	-80.544755	Non-Section 404
Non-aquatic Linear Feature 9 (Ditch)	33.307791	-80.536854	Non-Section 404
Non-aquatic Linear Feature 10 (Ditch)	33.326773	-80.542816	Non-Section 404
Non-aquatic Linear Feature 11 (Ditch)	33.320018	-80.544755	Non-Section 404
Non-aquatic Linear Feature 12 (Ditch)	33.312013	-80.552227	Non-Section 404
Non-aquatic Linear Feature 13 (Ditch)	33.309413	-80.53869	Non-Section 404
Non-aquatic Linear Feature 14 (Ditch)	33.312874	-80.542486	Non-Section 404
Non-aquatic Linear Feature 15 (Ditch)	33.307624	-80.537442	Non-Section 404





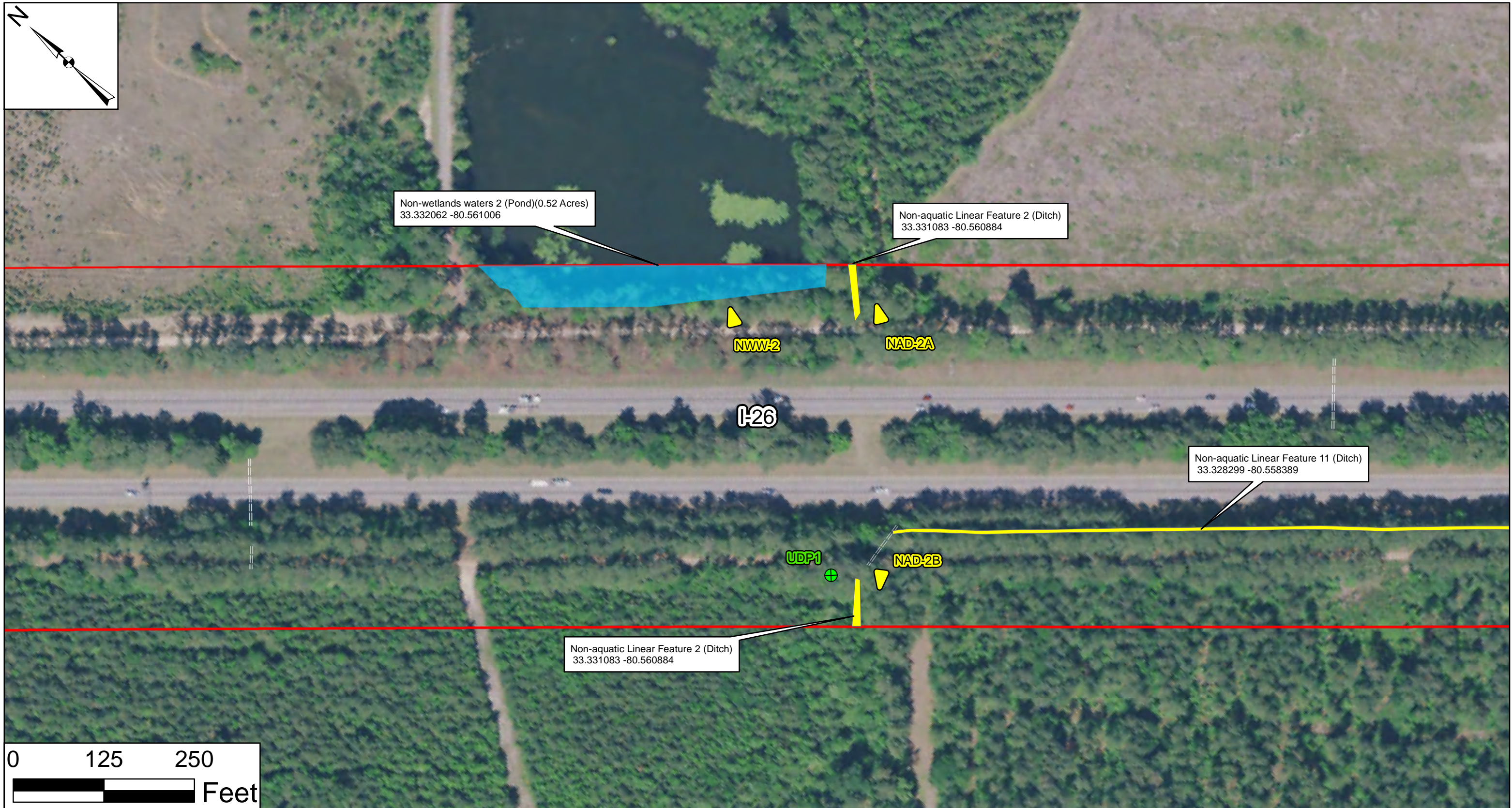
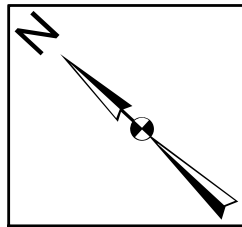
**Legend**

- Photo Point
- Data Point
- Pipe
- Non-aquatic Linear Feature (Ditch)
- Project Study Area (483.39 Acres)



I-26 and I-95 Interchange Improvement Orangeburg and Dorchester Counties SCDOT P038677		<b>AQUATIC RESOURCES</b>	Figure 5 Page 1 of 33
Source: USDA Orthoimagery 2021	Drawn By: RHH QA/QC: KLM April 2023		



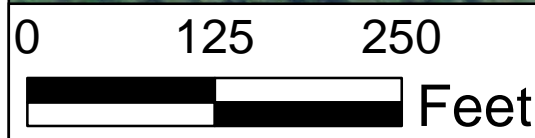


Non-wetlands waters 2 (Pond)(0.52 Acres)  
33.332062 -80.561006

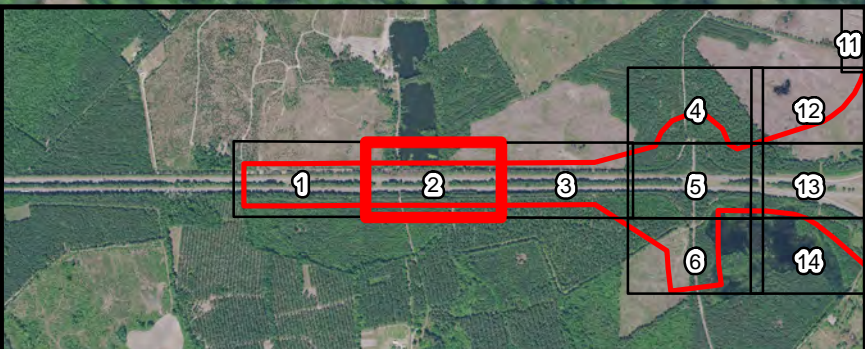
Non-aquatic Linear Feature 2 (Ditch)  
33.331083 -80.560884

Non-aquatic Linear Feature 11 (Ditch)  
33.328299 -80.558389

Non-aquatic Linear Feature 2 (Ditch)  
33.331083 -80.560884



- Legend**
- Photo Point
  - Data Point
  - Pipe
  - Non-aquatic Linear Feature (Ditch)
  - Non-wetlands waters (Open Water)
  - Project Study Area (483.39 Acres)



I-26 and I-95 Interchange Improvement  
Orangeburg and Dorchester Counties  
SCDOT P038677

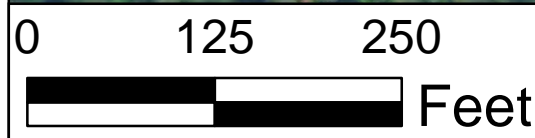
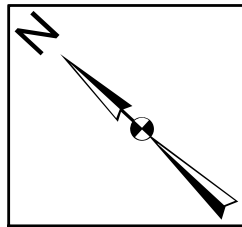
Source:  
USDA Orthoimagery  
2021

**AQUATIC RESOURCES**



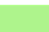



Drawn By: RHH  
QA/QC: KLM  
April 2023

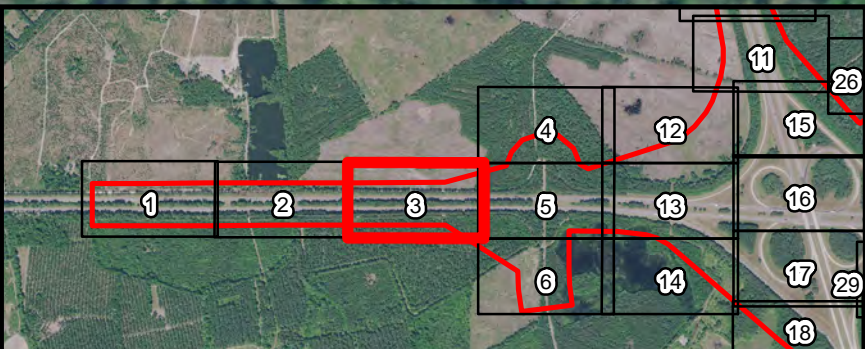
Figure 5  
Page 2 of 33





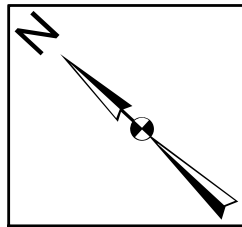
**Legend**

-  Photo Point
-  Data Point
-  Wetland
-  Pipe
-  Non-aquatic Linear Feature (Ditch)
-  Project Study Area (483.39 Acres)



<p>I-26 and I-95 Interchange Improvement Orangeburg and Dorchester Counties SCDOT P038677</p>		
<p>Source: USDA Orthoimagery 2021</p>	<p><b>AQUATIC RESOURCES</b></p> <p>Drawn By: RHH QA/QC: KLM April 2023</p>	<p>Figure 5 Page 3 of 33</p>



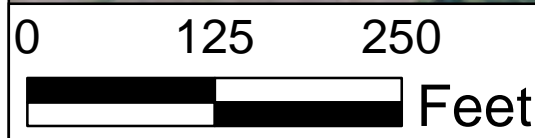


Wetland T2 (PSS)(1.10 Acres)  
33.32634; -80.554047

Wetland T1 (PEM)(0.14 Acres)  
33.325774; -80.552614

Wetland B (PFO)(4.06 Acres)  
33.323945 -80.551858

Whetsell Pond



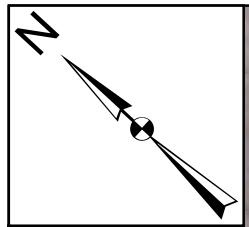
**Legend**

- Wetland
- Project Study Area (483.39 Acres)



I-26 and I-95 Interchange Improvement Orangeburg and Dorchester Counties SCDOT P038677		
Source: USDA Orthoimagery  2021	<b>AQUATIC RESOURCES</b>  Drawn By: RHH QA/QC: KLM April 2023	Figure 5  Page 4 of 33





Wetland T2 (PSS)(1.10 Acres)  
33.32634; -80.554047

Wetland T1 (PEM)(0.14 Acres)  
33.325774; -80.552614

Wetland B (PFO)(4.06 Acres)  
33.323945 -80.551858

Whetsell Pond

WDPB  
WPB1  
UDPB  
UPB1

I-26

Non-aquatic Linear Feature 11(Ditch)  
33.328299 -80.558389

Wetland A (PFO)(3.94 Acres)  
33.32558; -80.556297

Non-wetlands waters 3 (Pond)(0.48 Acres)  
33.3233 -80.553627

Non-wetlands waters 3 (Pond)(0.75 Acres)  
33.322237; -80.552631

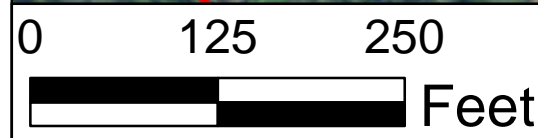
UAWA-1  
AWA-1  
AUDPA  
AWDPA

Non-wetlands waters 3 (Pond)(2.39Acres)  
33.323645 -80.55518

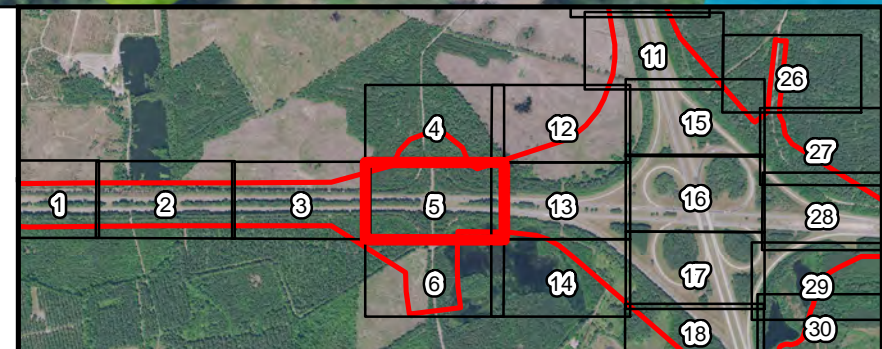
UP-1  
UDP1  
NWW3-2  
WPC1  
UPC1  
UDPC  
WDFC

Wetland C (PEM)(0.06 Acres)  
33.322812; -80.553262

NWW3-1  
AWA-2



- Legend**
- Photo Point
  - Data Point
  - Pipe
  - Wetland
  - Non-aquatic Linear Feature (Ditch)
  - Non-wetlands waters (Open Water)
  - Project Study Area (483.39 Acres)



I-26 and I-95 Interchange Improvement  
Orangeburg and Dorchester Counties  
SCDOT P038677

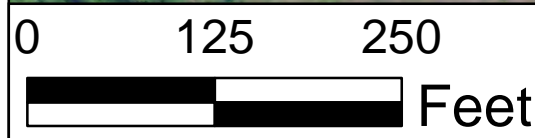
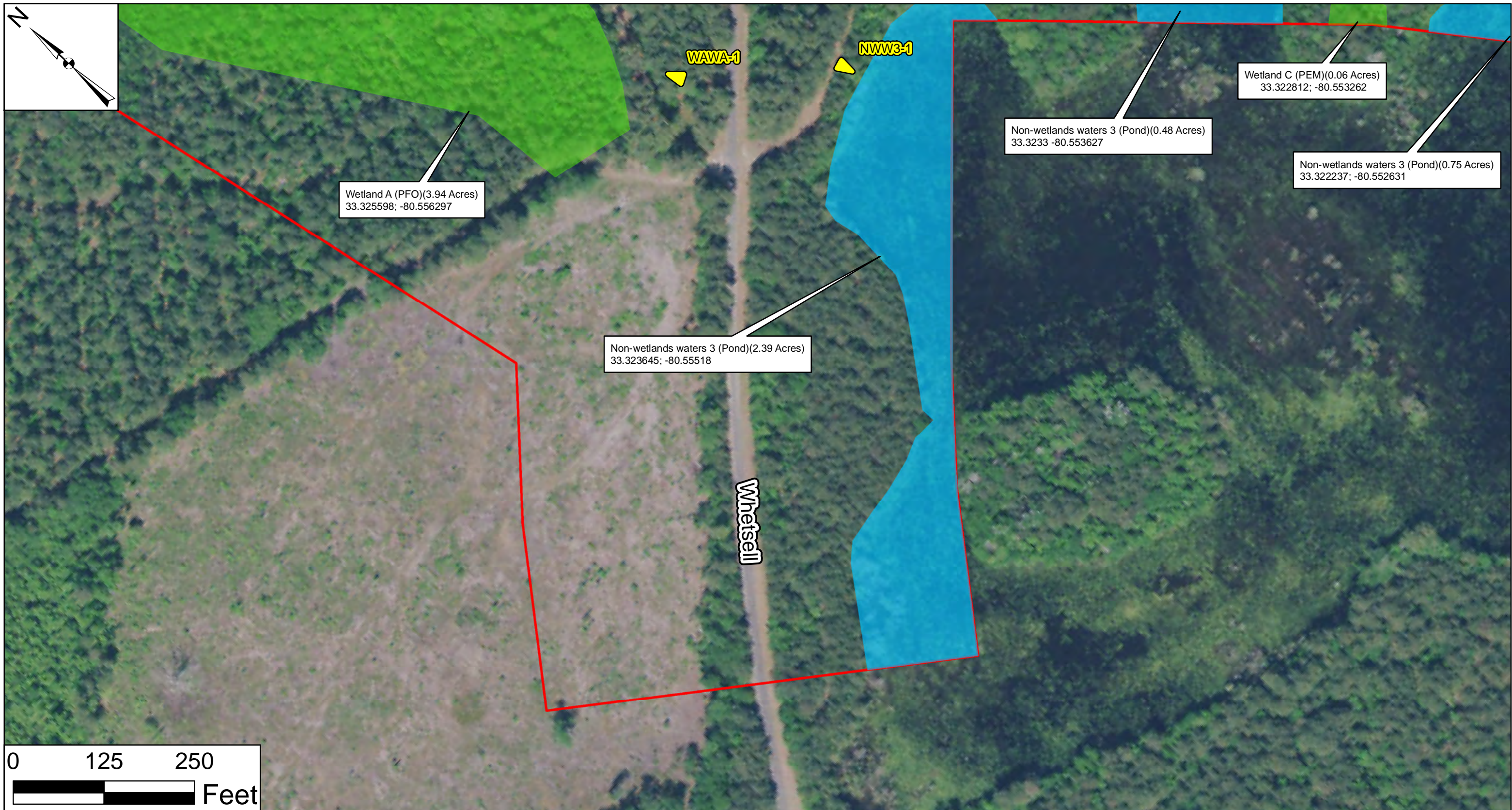
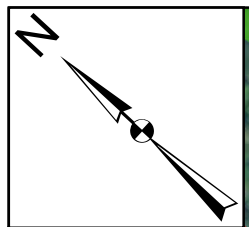
Source:  
USDA Orthoimagery  
2021

**AQUATIC RESOURCES**


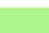


Drawn By: RHH  
QA/QC: KLM  
April 2023

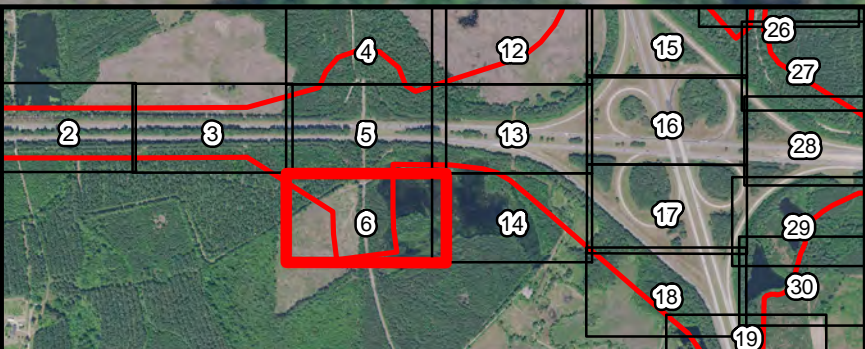
Figure 5  
Page 5 of 33





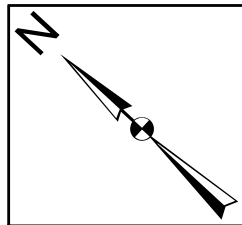
**Legend**

-  Photo Point
-  Wetland
-  Non-wetlands waters (Open Water)
-  Project Study Area (483.39 Acres)



I-26 and I-95 Interchange Improvement Orangeburg and Dorchester Counties SCDOT P038677		
Source: USDA Orthoimagery 2021	<b>AQUATIC RESOURCES</b>  Drawn By: RHH QA/QC: KLM April 2023	Figure 5 Page 6 of 33





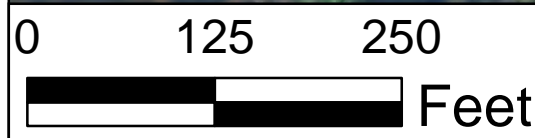
No Aquatic Resources Identified within Mapped Limits

Non-aquatic Linear Feature 8 (Ditch)  
33.320018; -80.544755

Non-aquatic Linear Feature 10 (Ditch)  
33.326773 -80.542816

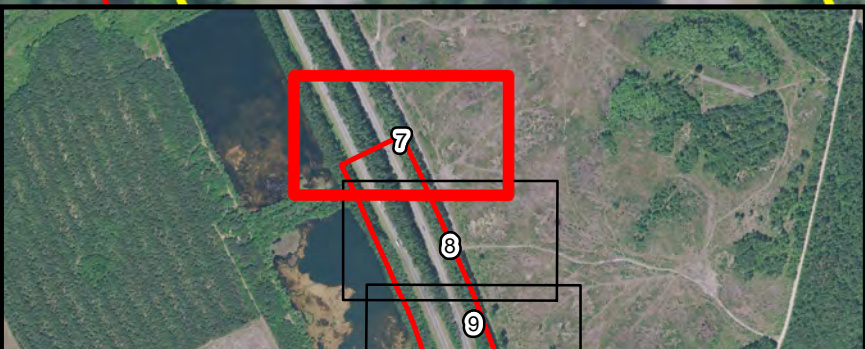
I-95

I-95



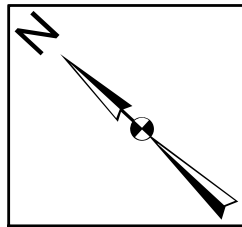
**Legend**

- Non-aquatic Linear Feature (Ditch)
- Project Study Area (483.39 Acres)



I-26 and I-95 Interchange Improvement Orangeburg and Dorchester Counties SCDOT P038677		
Source: USDA Orthoimagery  2021	<b>AQUATIC RESOURCES</b>  Drawn By: RHH QA/QC: KLM April 2023	Figure 5  Page 7 of 33





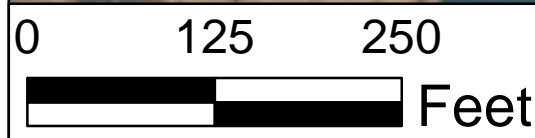
No Aquatic Resources Identified within Mapped Limits

Non-aquatic Linear Feature 8 (Ditch)  
33.320018; -80.544755

Non-aquatic Linear Feature 10 (Ditch)  
33.326773 -80.542816

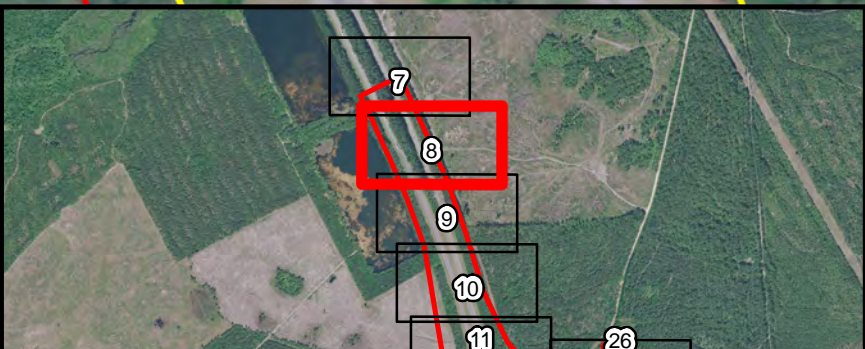
I-95

I-26



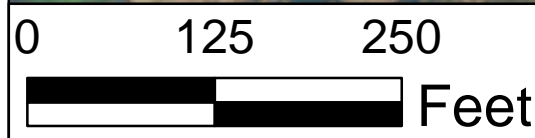
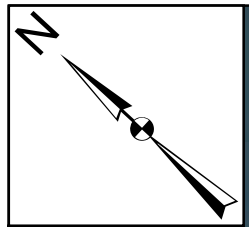
**Legend**

- Non-aquatic Linear Feature (Ditch)
- Project Study Area (483.39 Acres)



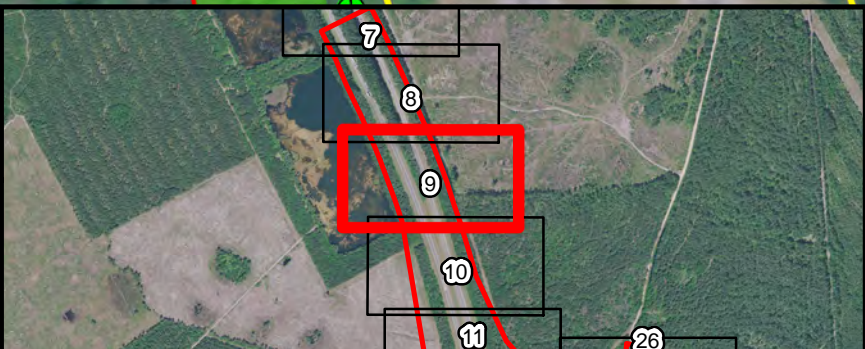
I-26 and I-95 Interchange Improvement Orangeburg and Dorchester Counties SCDOT P038677		
Source: USDA Orthoimagery 2021	<b>AQUATIC RESOURCES</b>  Drawn By: RHH QA/QC: KLM April 2023	Figure 5 Page 8 of 33





**Legend**

- Photo Point
- Data Point
- Wetland
- Non-aquatic Linear Feature (Ditch)
- Project Study Area (483.39 Acres)



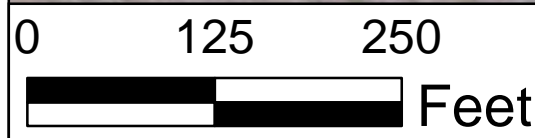
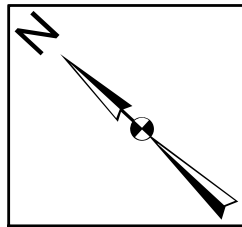
I-26 and I-95 Interchange Improvement  
Orangeburg and Dorchester Counties  
SCDOT P038677

Source:  
USDA Orthoimagery  
2021

**AQUATIC RESOURCES**  
  
Drawn By: RHH  
QA/QC: KLM  
April 2023

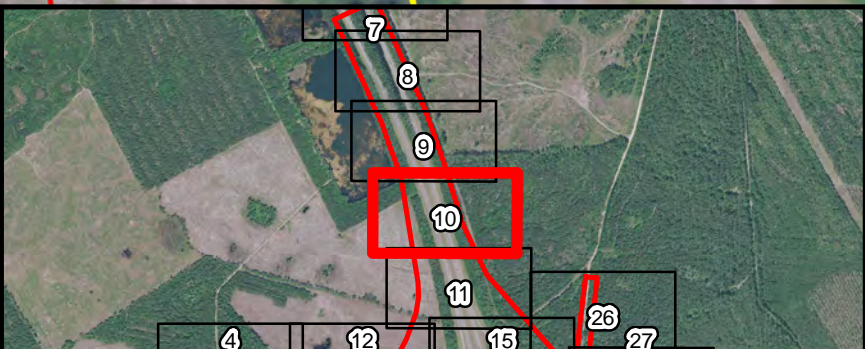
Figure 5  
Page 9 of 33





**Legend**

- Data Point
- Photo Point
- Wetland
- Non-aquatic Linear Feature (Ditch)
- Project Study Area (483.39 Acres)



I-26 and I-95 Interchange Improvement  
 Orangeburg and Dorchester Counties  
 SCDOT P038677

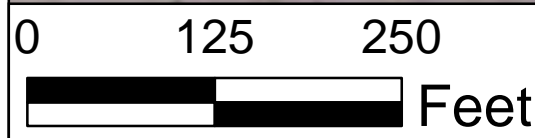
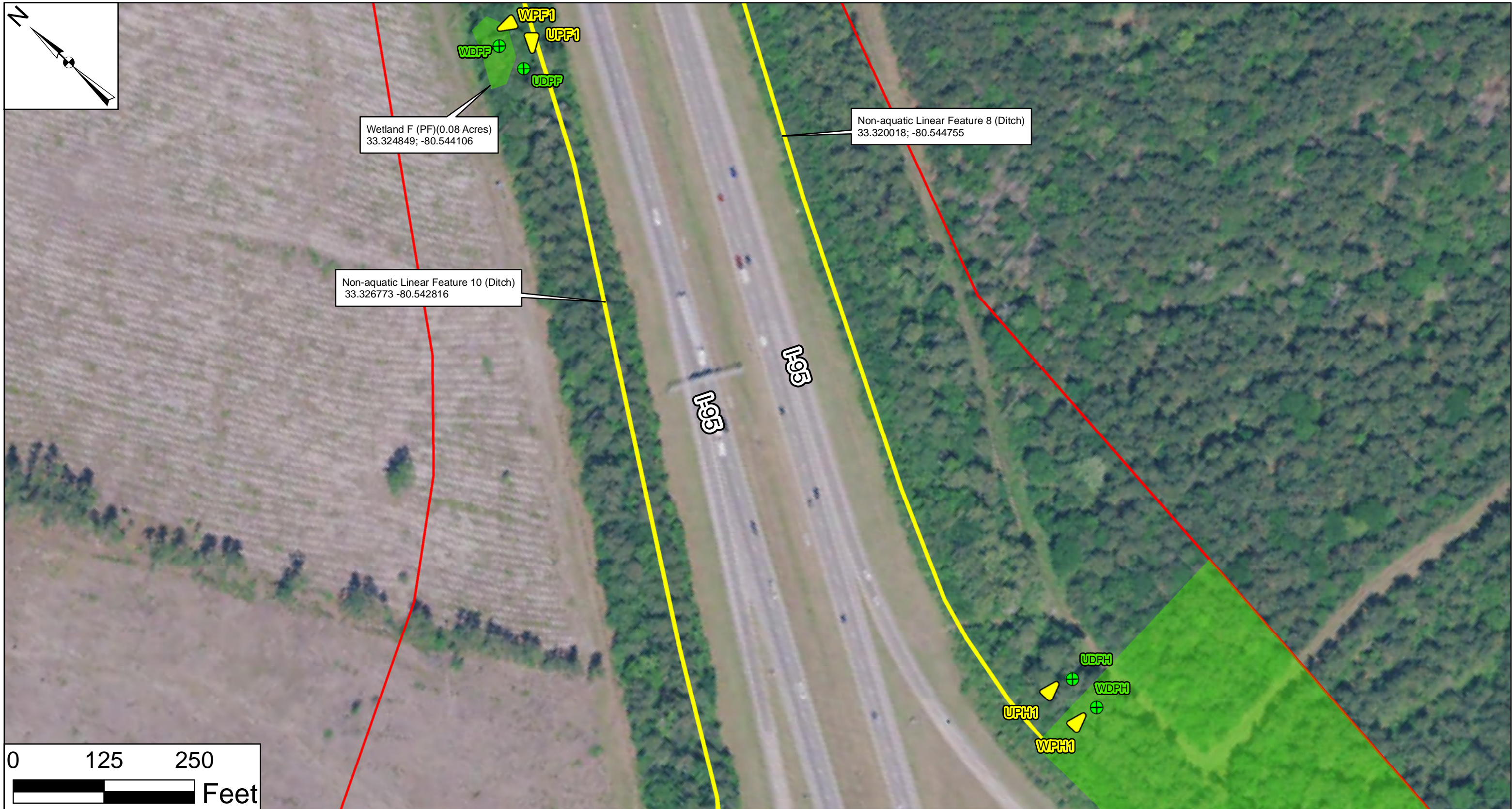
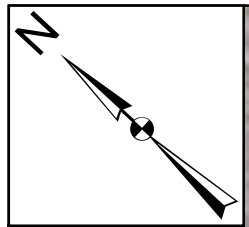
Source:  
 USDA Orthoimagery  
 2021

**AQUATIC RESOURCES**

Drawn By: RHH  
 QA/QC: KLM  
 April 2023

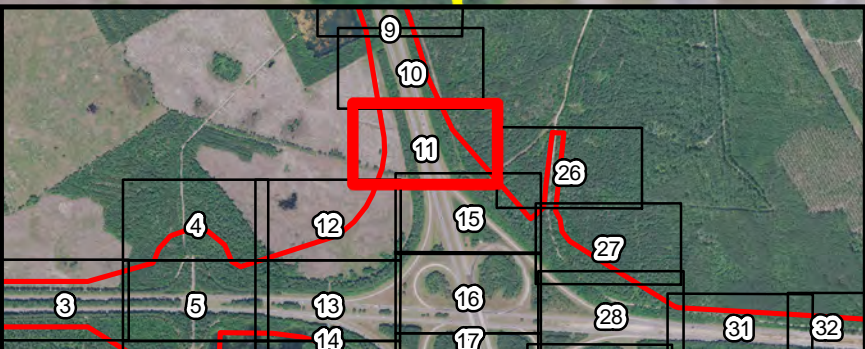
Figure 5  
 Page 10 of 33





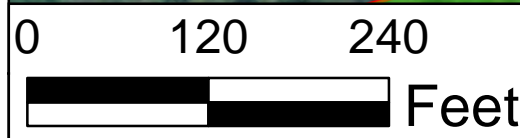
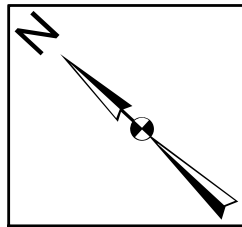
**Legend**

- Photo Point
- Data Point
- Wetland
- Non-aquatic Linear Feature (Ditch)
- Project Study Area (483.39 Acres)



<p>I-26 and I-95 Interchange Improvement Orangeburg and Dorchester Counties SCDOT P038677</p>		
<p>Source: USDA Orthoimagery 2021</p>	<p><b>AQUATIC RESOURCES</b></p> <p>Drawn By: RHH QA/QC: KLM April 2023</p>	<p>Figure 5 Page 11 of 33</p>





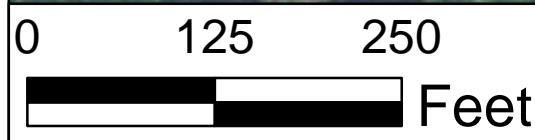
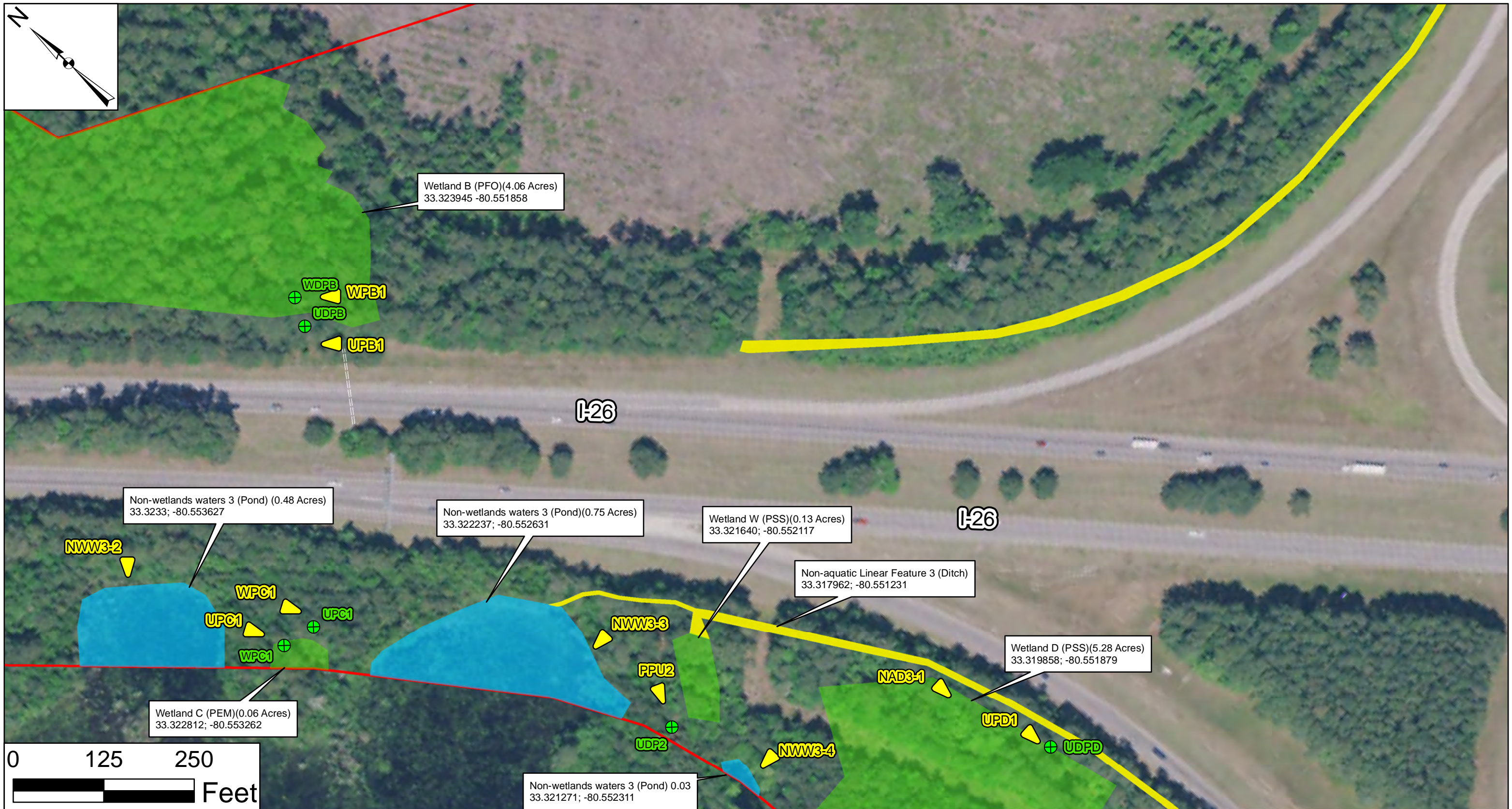
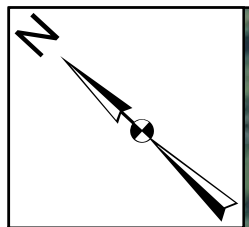
**Legend**

	Wetland
	Non-aquatic Linear Feature (Ditch)
	Project Study Area (483.39 Acres)



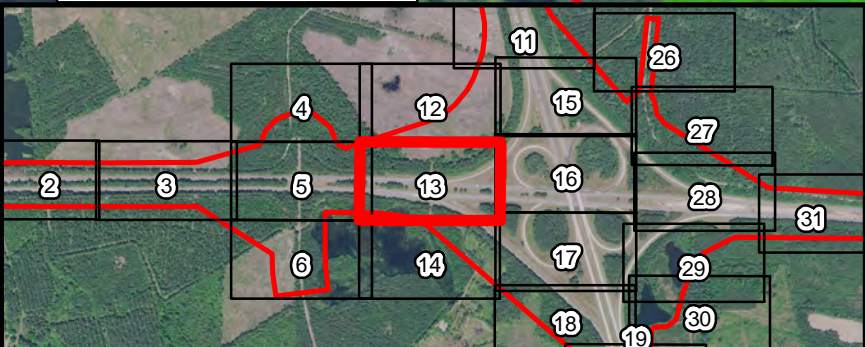
I-26 and I-95 Interchange Improvement Orangeburg and Dorchester Counties SCDOT P038677		
Source: USDA Orthoimagery 2021	<b>AQUATIC RESOURCES</b>  Drawn By: RHH QA/QC: KLM April 2023	Figure 5 Page 12 of 33





**Legend**

	Photo Point
	Data Point
	Wetland
	Non-aquatic Linear Feature (Ditch)
	Pipe
	Non-wetlands waters (Open Water)
	Project Study Area (483.39 Acres)



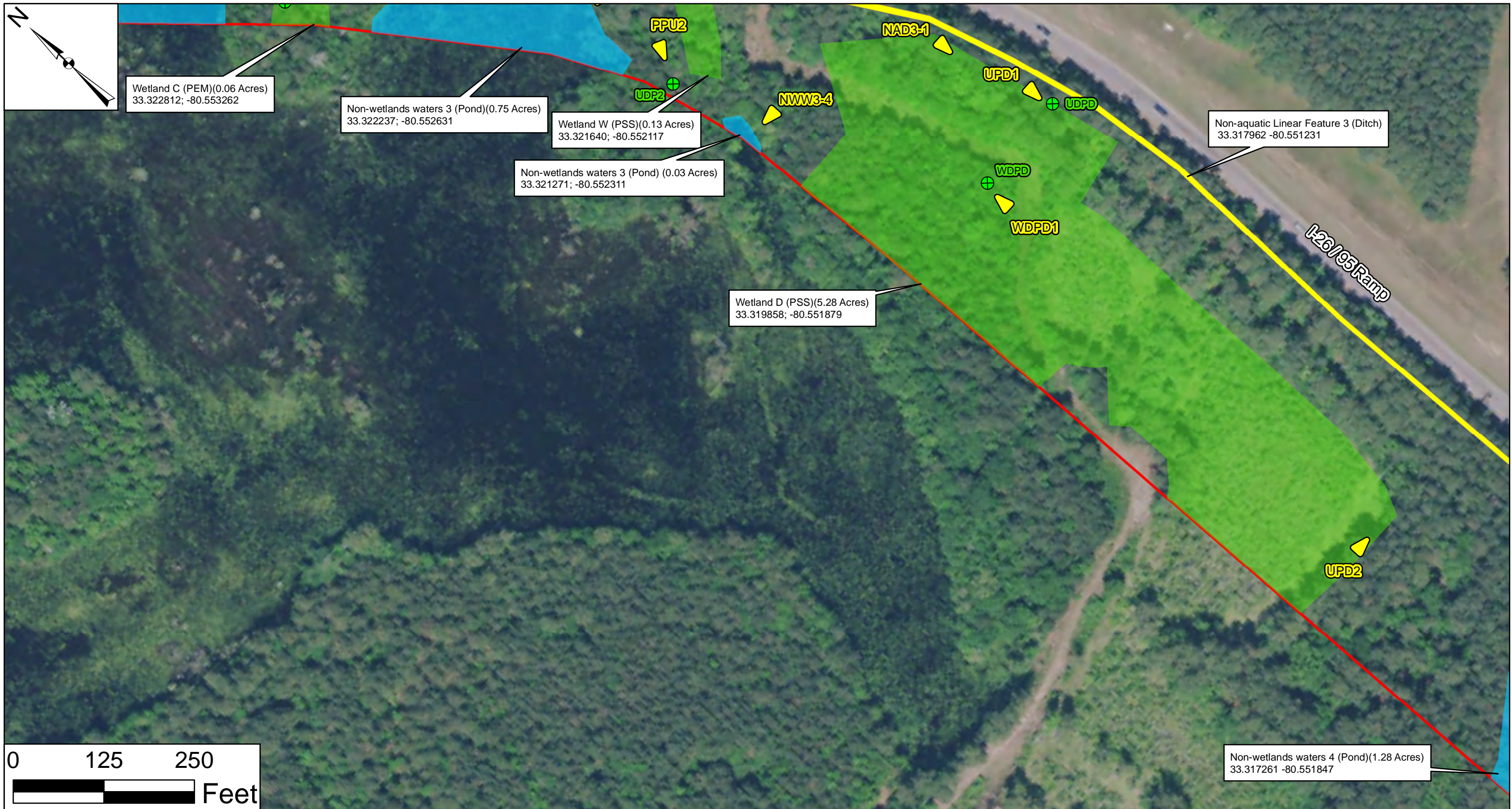
I-26 and I-95 Interchange Improvement  
Orangeburg and Dorchester Counties  
SCDOT P038677

Source:  
USDA Orthoimagery  
2021

**AQUATIC RESOURCES**  
Drawn By: RHH  
QA/QC: KLM  
April 2023

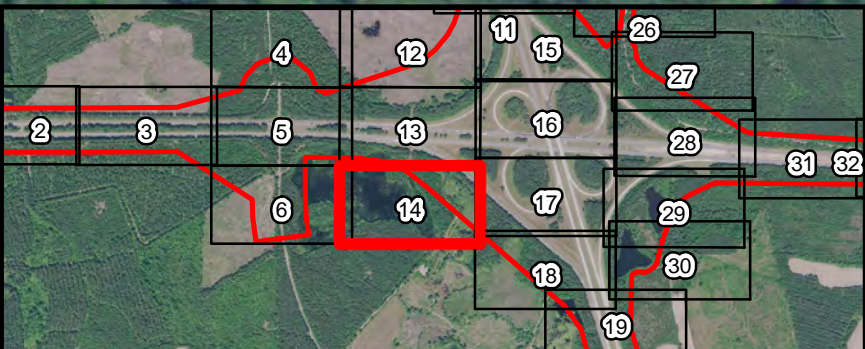
Figure 5  
Page 13 of 33





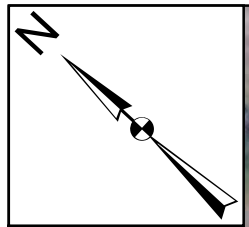
**Legend**

- ▶ Photo Point
- ⊕ Data Point
- Wetland
- Non-aquatic Linear Feature (Ditch)
- Non-wetlands waters (Open Water)
- Project Study Area (483.39 Acres)



<p>I-26 and I-95 Interchange Improvement Orangeburg and Dorchester Counties SCDOT P038677</p>		
<p>Source: USDA Orthoimagery 2021</p>	<p><b>AQUATIC RESOURCES</b></p> <p>Drawn By: RHH QA/QC: KLM April 2023</p>	<p>Figure 5 Page 14 of 33</p>





Non-aquatic Linear Feature 10 (Ditch)  
33.326773; -80.542816

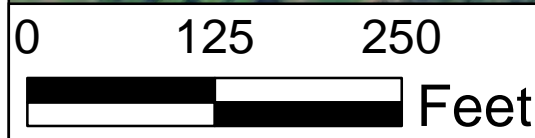
Non-aquatic Linear Feature 8 (Ditch)  
33.320018; -80.544755

Wetland H1 (PFO)(8.81 Acres)  
33.20166; -80.544245

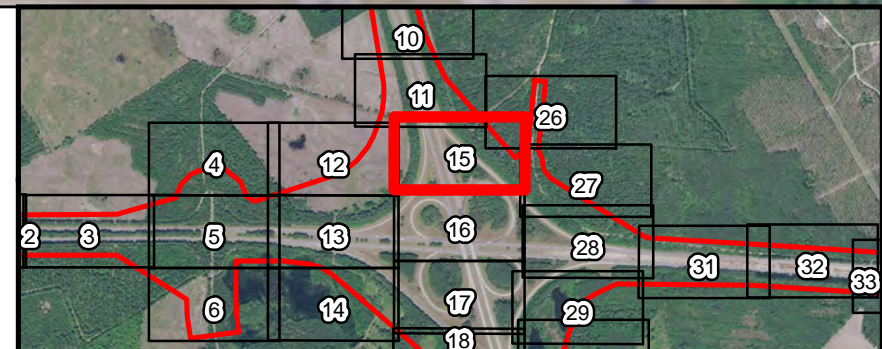
Wetland H2 (PFO)(0.91 Acres)  
33.320524; -80.545503

Non-wetlands waters 1 (Stream)(0.53 Acres; 1,393.52 LF)  
33.317945; -80.544561

Wetland X1 (PFO)(1.16 Acres)  
33.318789; -80.545926



- Legend**
- Data Point
  - Photo Point
  - Pipe
  - Non-wetlands waters (Stream)
  - Wetland
  - Non-aquatic Linear Feature (Ditch)
  - Project Study Area (483.39 Acres)



I-26 and I-95 Interchange Improvement  
Orangeburg and Dorchester Counties  
SCDOT P038677

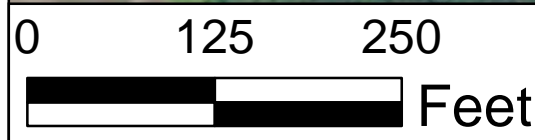
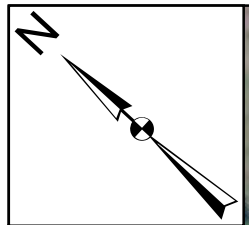
Source:  
USDA Orthoimagery  
2021

### AQUATIC RESOURCES

Drawn By: RHH  
QA/QC: KLM  
April 2023

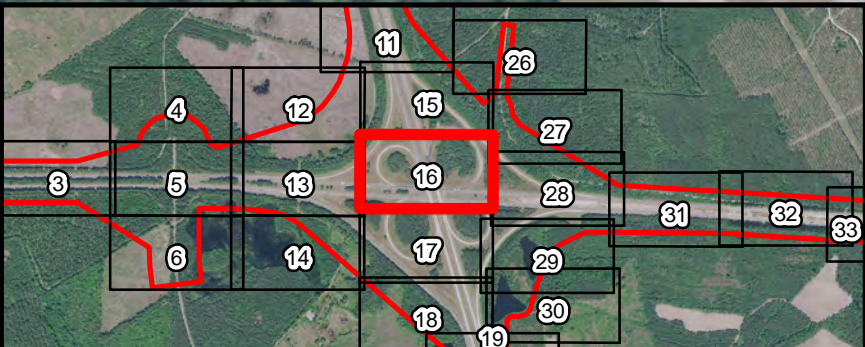
Figure 5  
Page 15 of 33





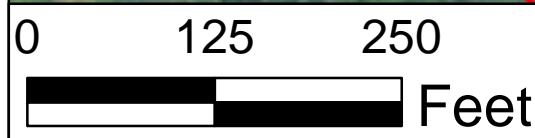
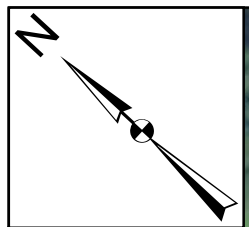
**Legend**

- Data Point
- Photo Point
- Pipe
- Non-wetlands waters (Stream)
- Wetland
- Non-aquatic Linear Feature (Ditch)
- Project Study Area (483.39 Acres)



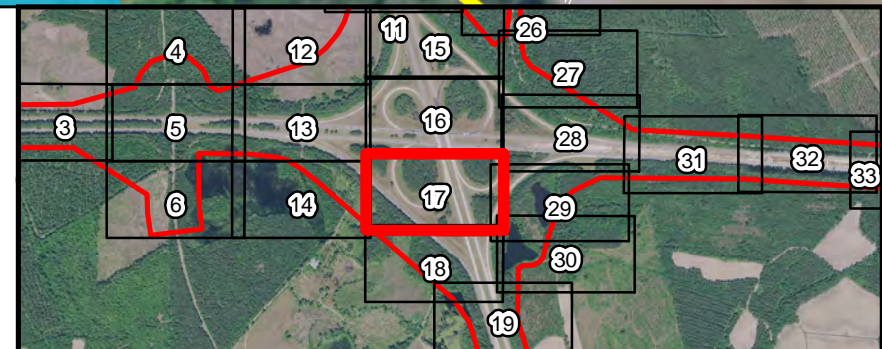
<p>I-26 and I-95 Interchange Improvement Orangeburg and Dorchester Counties SCDOT P038677</p>		
<p>Source: USDA Orthoimagery 2021</p>	<p><b>AQUATIC RESOURCES</b></p> <p>Drawn By: RHH QA/QC: KLM April 2023</p>	<p>Figure 5 Page 16 of 33</p>





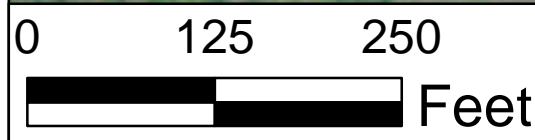
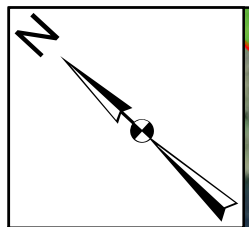
**Legend**

	Photo Point		Pipe
	Data Point		
	Wetland		
	Non-aquatic Resource (Pond)		
	Non-aquatic Linear Feature (Ditch)		
	Non-wetlands waters (Open Water)		
	Project Study Area (483.39 Acres)		

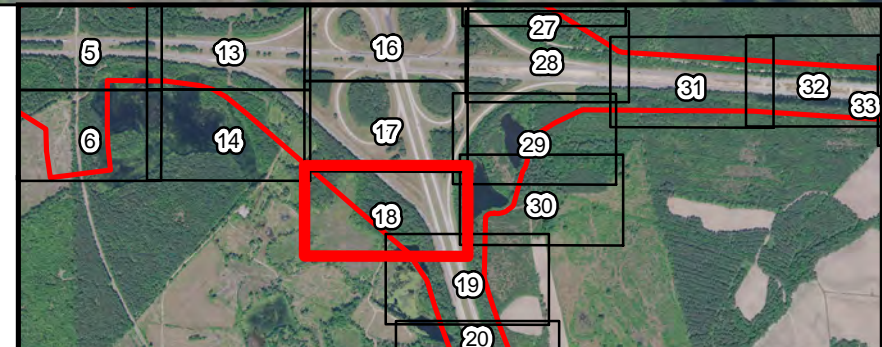


I-26 and I-95 Interchange Improvement Orangeburg and Dorchester Counties SCDOT P038677		
Source: USDA Orthoimagery 2021	<b>AQUATIC RESOURCES</b>  Drawn By: RHH QA/QC: KLM April 2023	Figure 5 Page 17 of 33



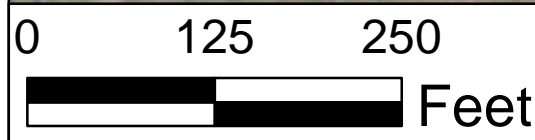
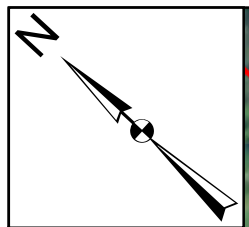


- Legend**
- Photo Point
  - Data Point
  - Pipe
  - Non-aquatic Resource (Pond)
  - Wetland
  - Non-aquatic Linear Feature (Ditch)
  - Non-wetlands waters (Open Water)
  - Project Study Area (483.39 Acres)

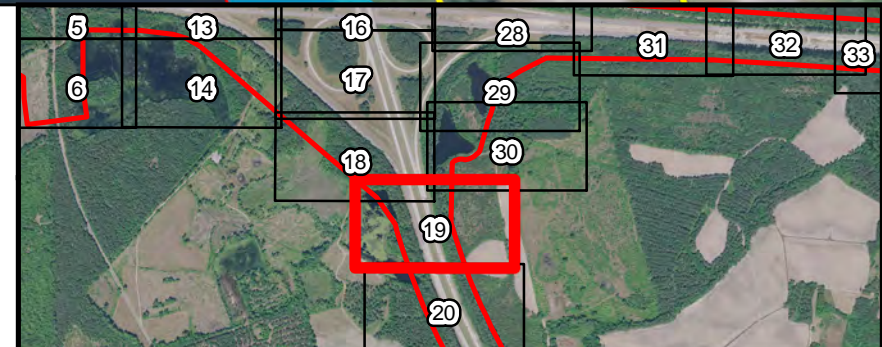


I-26 and I-95 Interchange Improvement Orangeburg and Dorchester Counties SCDOT P038677		
Source: USDA Orthoimagery 2021	<b>AQUATIC RESOURCES</b>  Drawn By: RHH QA/QC: KLM April 2023	Figure 5 Page 18 of 33



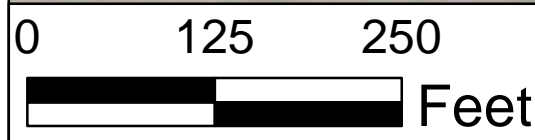
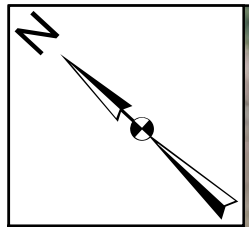





- Legend**
- Photo Point
  - Data Point
  - Non-aquatic Resource (Pond)
  - Non-aquatic Linear Feature (Ditch)
  - Non-wetlands waters (Open Water)
  - Project Study Area (483.39 Acres)

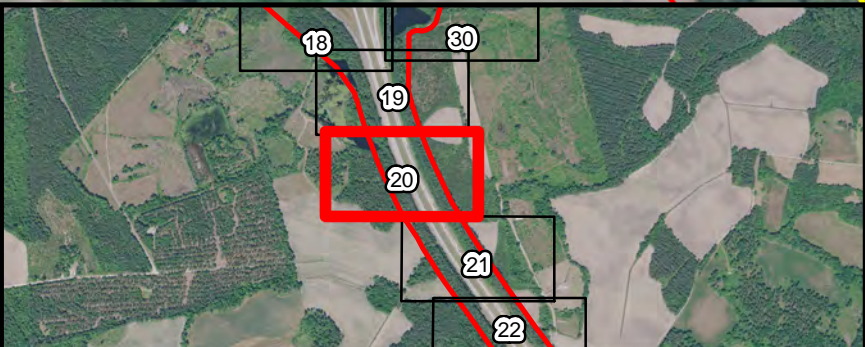


I-26 and I-95 Interchange Improvement Orangeburg and Dorchester Counties SCDOT P038677		
Source: USDA Orthoimagery 2021	<b>AQUATIC RESOURCES</b>  Drawn By: RHH QA/QC: KLM April 2023	Figure 5 Page 19 of 33



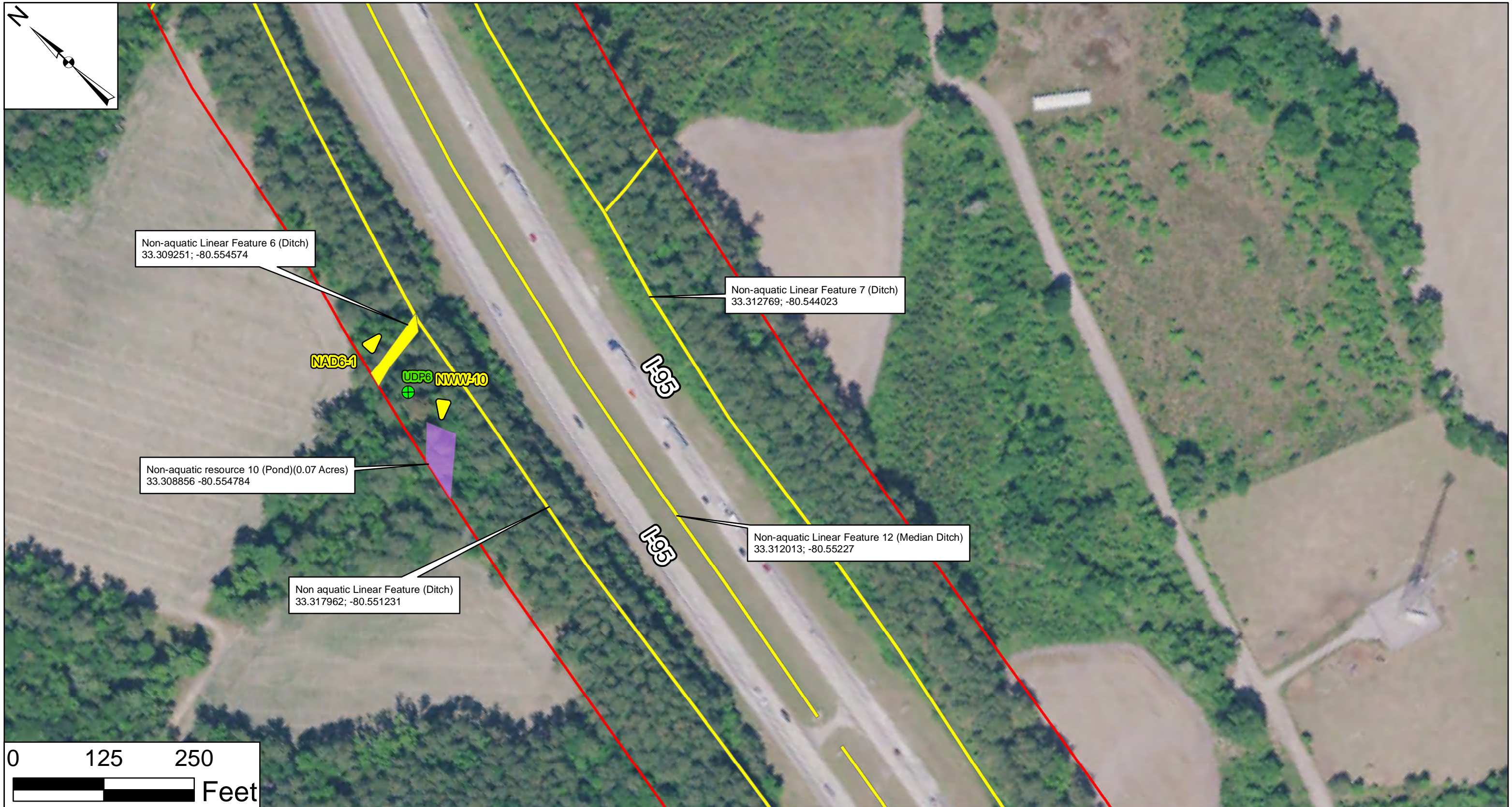
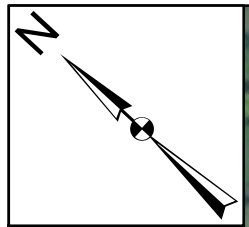


Legend	
	Non-aquatic Linear Feature (Ditch)
	Non-wetlands waters (Open Water)
	Project Study Area (483.39 Acres)



I-26 and I-95 Interchange Improvement Orangeburg and Dorchester Counties SCDOT P038677		
Source: USDA Orthoimagery 2021	<b>AQUATIC RESOURCES</b>  Drawn By: RHH QA/QC: KLM April 2023	Figure 5 Page 20 of 33





Non-aquatic Linear Feature 6 (Ditch)  
33.309251; -80.554574

Non-aquatic Linear Feature 7 (Ditch)  
33.312769; -80.544023

Non-aquatic resource 10 (Pond)(0.07 Acres)  
33.308856 -80.554784

Non-aquatic Linear Feature 12 (Median Ditch)  
33.312013; -80.55227

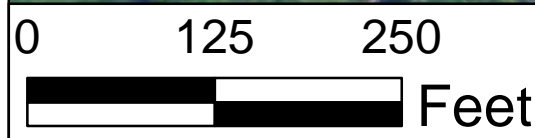
Non aquatic Linear Feature (Ditch)  
33.317962; -80.551231

NAD6-1

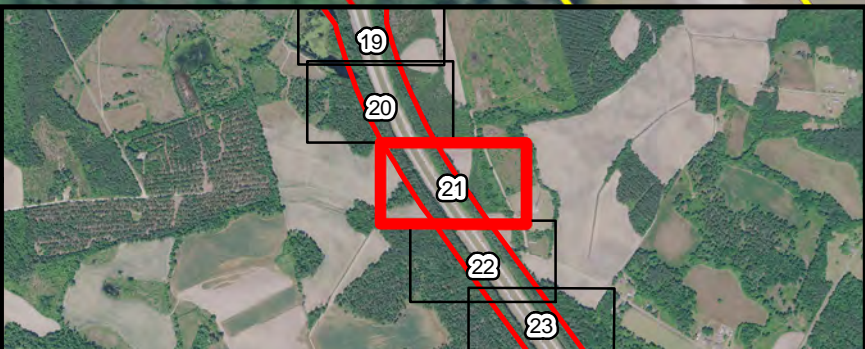
UDF6 NWW-10

I-95

I-95

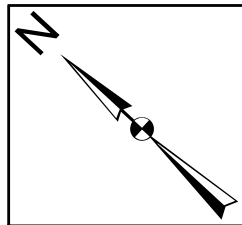


- Legend**
- Photo Point
  - Data Point
  - Non-aquatic Linear Feature (Ditch)
  - Non-aquatic Resource (Pond)
  - Project Study Area (483.39 Acres)



I-26 and I-95 Interchange Improvement Orangeburg and Dorchester Counties SCDOT P038677		
Source: USDA Orthoimagery  2021	<b>AQUATIC RESOURCES</b>  Drawn By: RHH QA/QC: KLM April 2023	Figure 5  Page 21 of 33



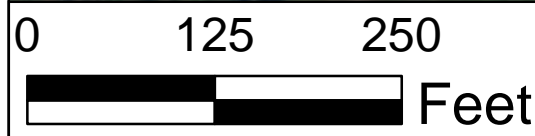




No Aquatic Resources within Mapped Extents

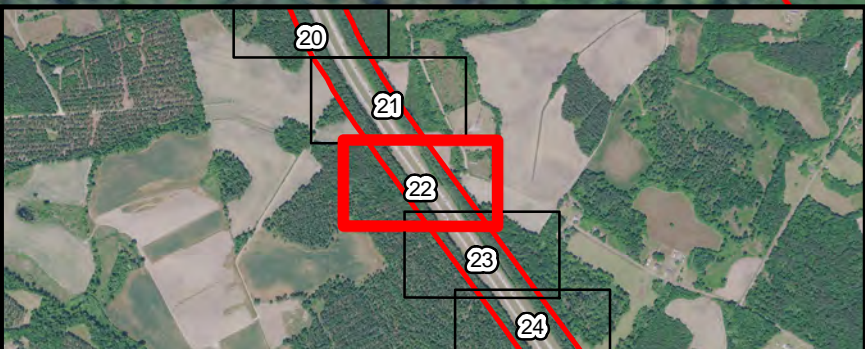
Non-aquatic Linear Feature 7 (Ditch)  
33.312769; -80.544023

Non aquatic Linear Feature (Ditch)  
33.317962; -80.551231

Non-aquatic Linear Feature 13(Median Ditch)  
33.309413; -80.53869



**Legend**  
 Non-aquatic Linear Feature (Ditch)  
 Project Study Area (483.39 Acres)



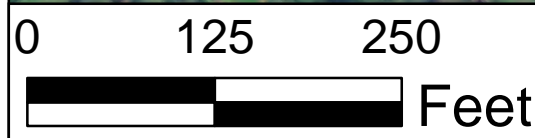
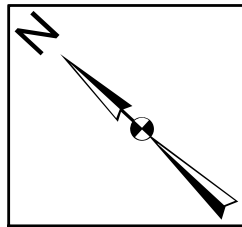
I-26 and I-95 Interchange Improvement  
Orangeburg and Dorchester Counties  
SCDOT P038677

Source:  
USDA Orthoimagery  
2021

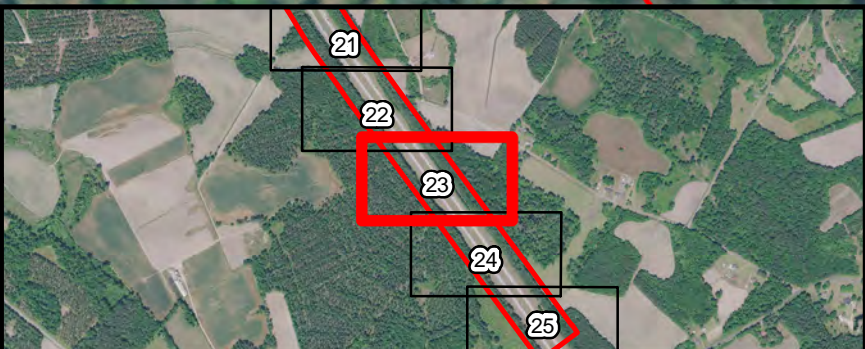
**AQUATIC RESOURCES**

Drawn By: RHH  
QA/QC: KLM  
April 2023



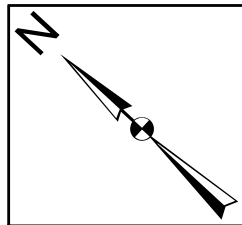


Legend	
	Wetland
	Non-aquatic Linear Feature (Ditch)
	Project Study Area (483.39 Acres)



I-26 and I-95 Interchange Improvement Orangeburg and Dorchester Counties SCDOT P038677		
Source: USDA Orthoimagery 2021	<b>AQUATIC RESOURCES</b>  Drawn By: RHH QA/QC: KLM April 2023	Figure 5  Page 23 of 33

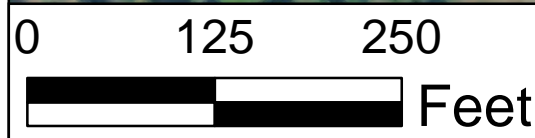




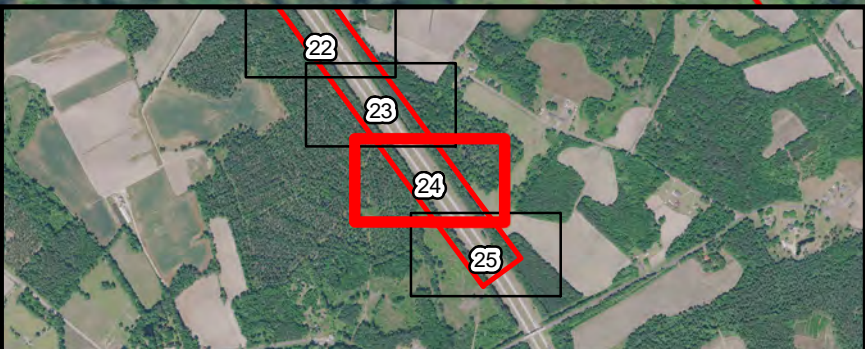
Wetland V (PFO)(0.22 Acres)  
33.302024; -80.555111

I-95

I-95



**Legend**  
Wetland  
Project Study Area (483.39 Acres)



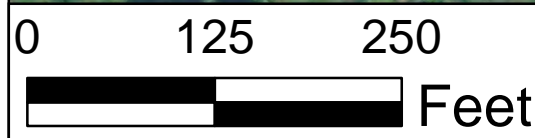
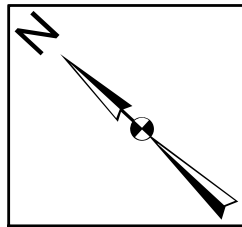
I-26 and I-95 Interchange Improvement  
Orangeburg and Dorchester Counties  
SCDOT P038677

Source:  
USDA Orthoimagery  
2021

**AQUATIC RESOURCES**  
Drawn By: RHH  
QA/QC: KLM  
April 2023

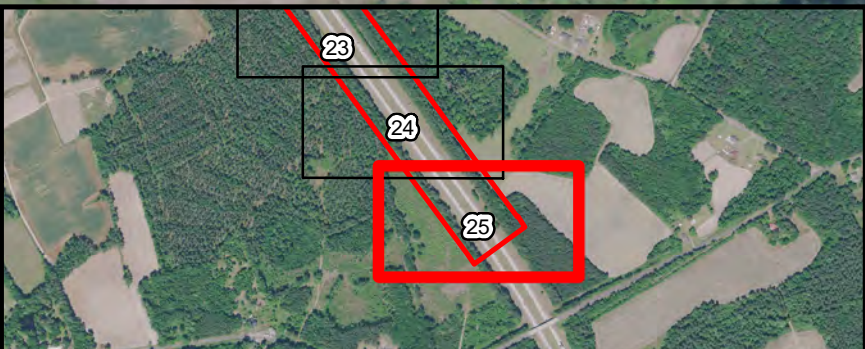
Figure 5  
Page 24 of 33





**Legend**

- Wetland
- Project Study Area (483.39 Acres)



I-26 and I-95 Interchange Improvement  
 Orangeburg and Dorchester Counties  
 SCDOT P038677

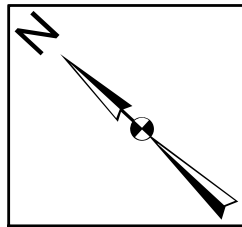
Source:  
 USDA Orthoimagery  
 2021

**AQUATIC RESOURCES**

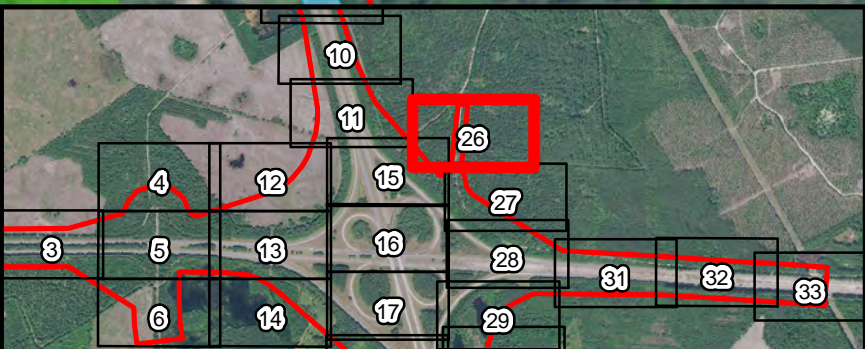
Drawn By: RHH  
 QA/QC: KLM  
 April 2023

Figure 5  
 Page 25 of 33





- Legend**
- Photo Point
  - Data Point
  - Wetland
  - Non-wetlands waters (Stream)
  - Project Study Area (483.39 Acres)



I-26 and I-95 Interchange Improvement  
Orangeburg and Dorchester Counties  
SCDOT P038677

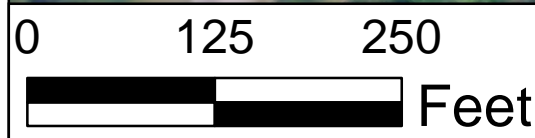
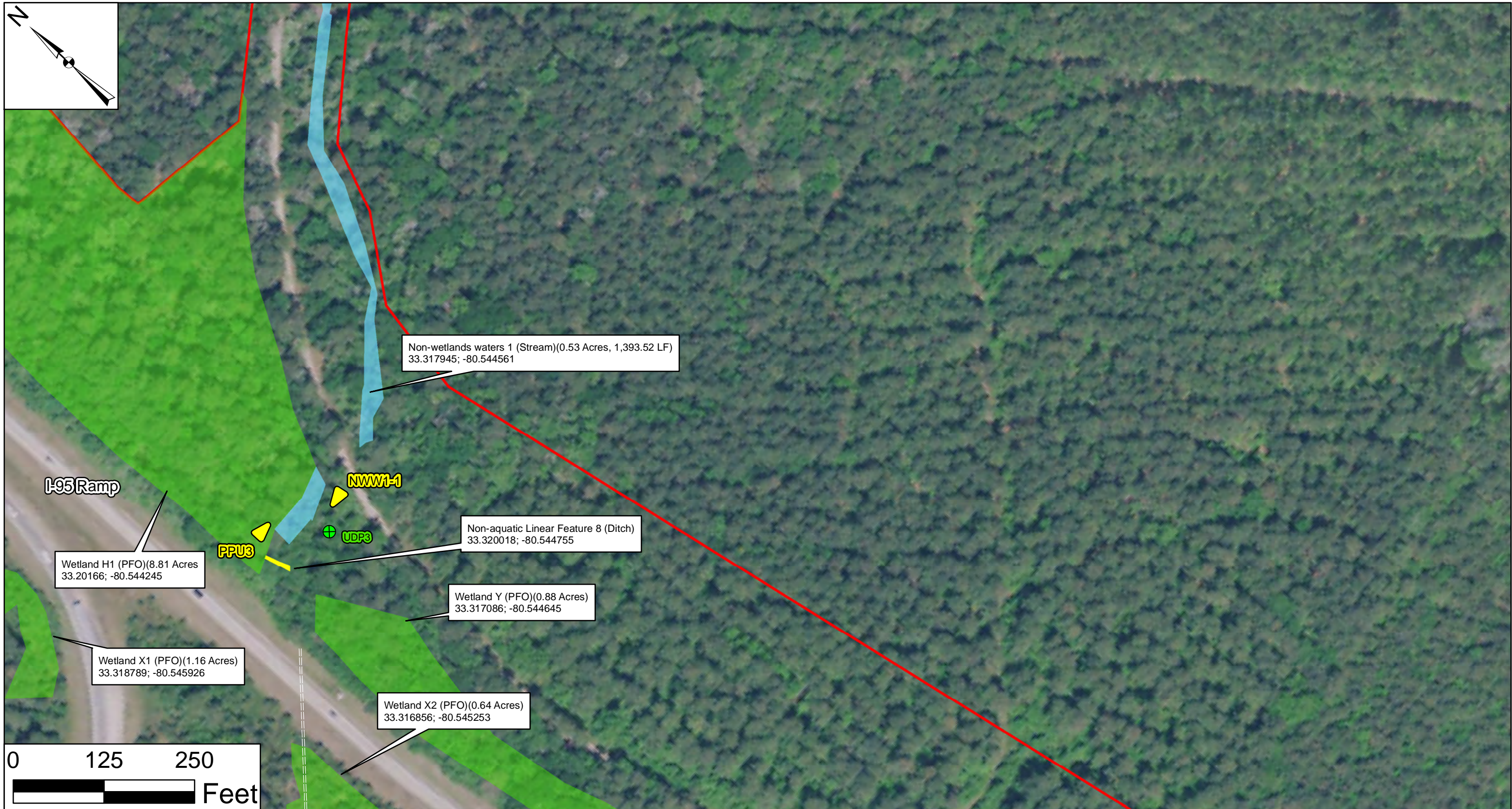
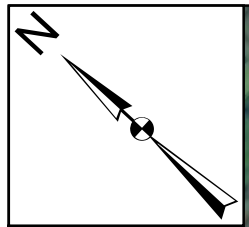
Source:  
USDA Orthoimagery  
2021

**AQUATIC RESOURCES**

Drawn By: RHH  
QA/QC: KLM  
April 2023

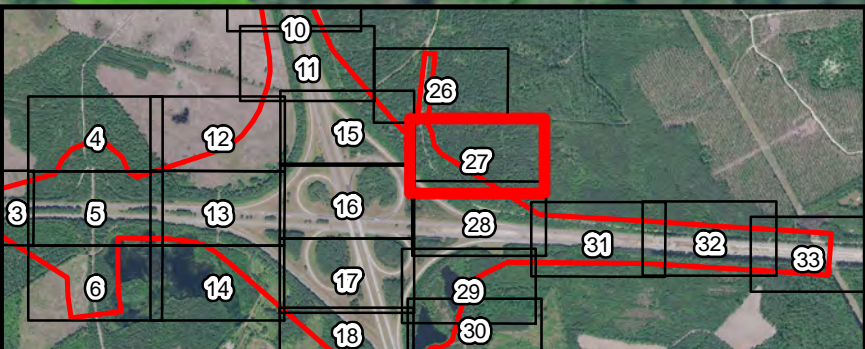
Figure 5  
Page 26 of 33





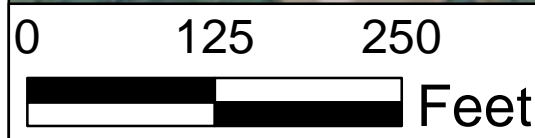
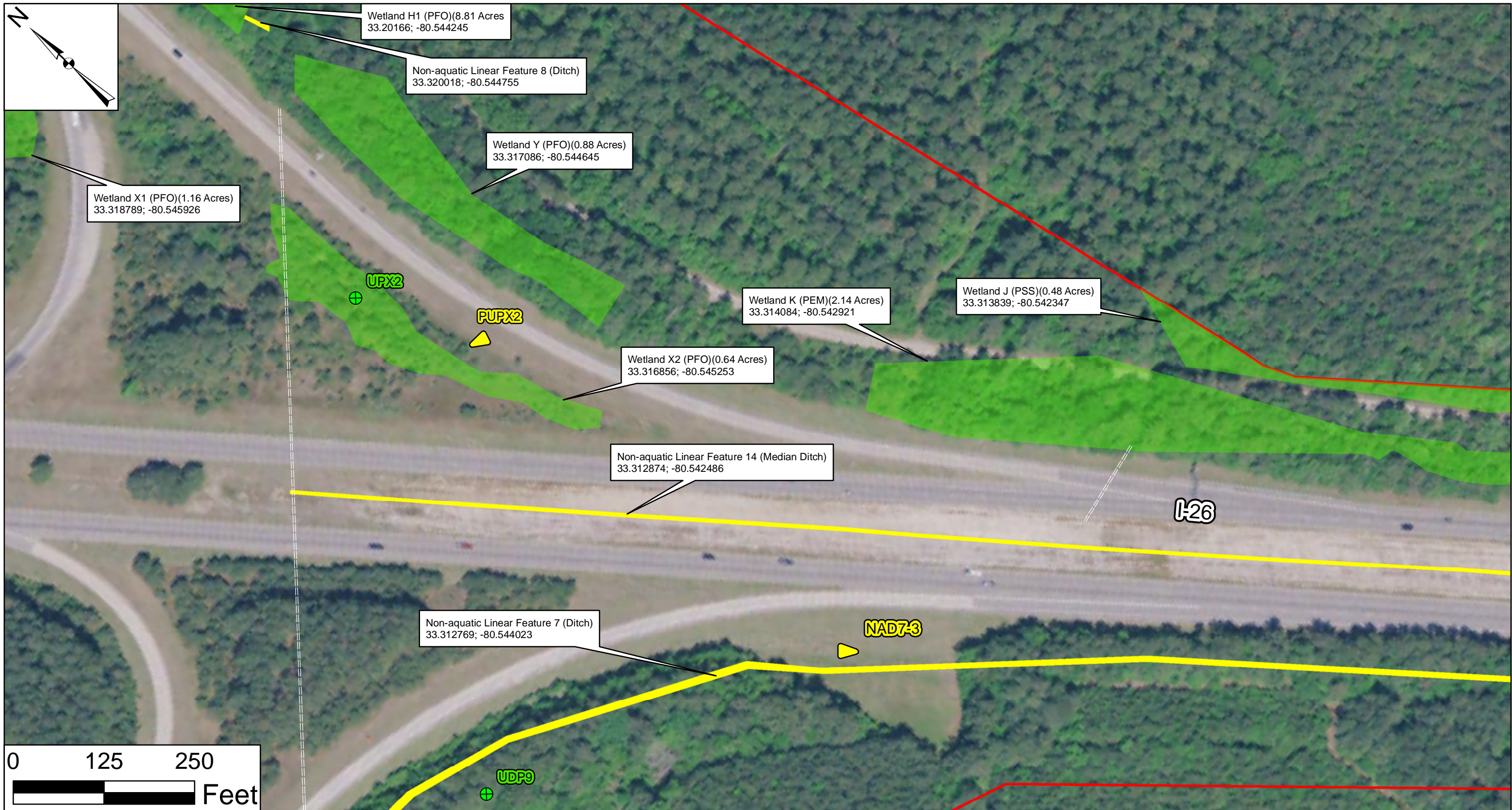
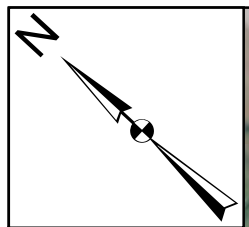
**Legend**

- Data Point
- Photo Point
- Pipe
- Non-wetlands waters (Stream)
- Wetland
- Non-aquatic Linear Feature (Ditch)
- Project Study Area (483.39 Acres)



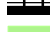





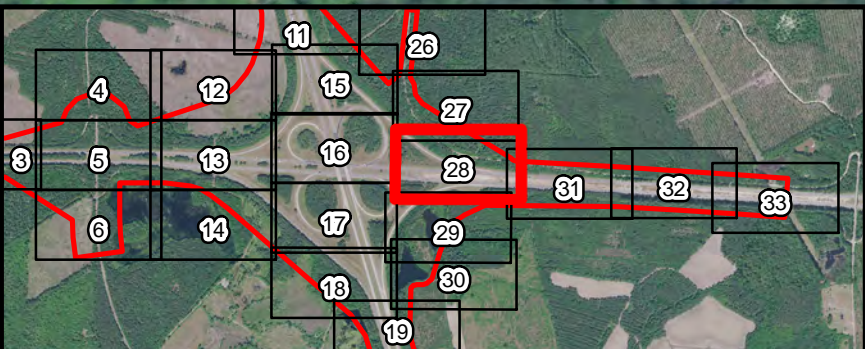
I-26 and I-95 Interchange Improvement Orangeburg and Dorchester Counties SCDOT P038677		
Source: USDA Orthoimagery 2021	<b>AQUATIC RESOURCES</b>  Drawn By: RHH QA/QC: KLM April 2023	Figure 5 Page 27 of 33





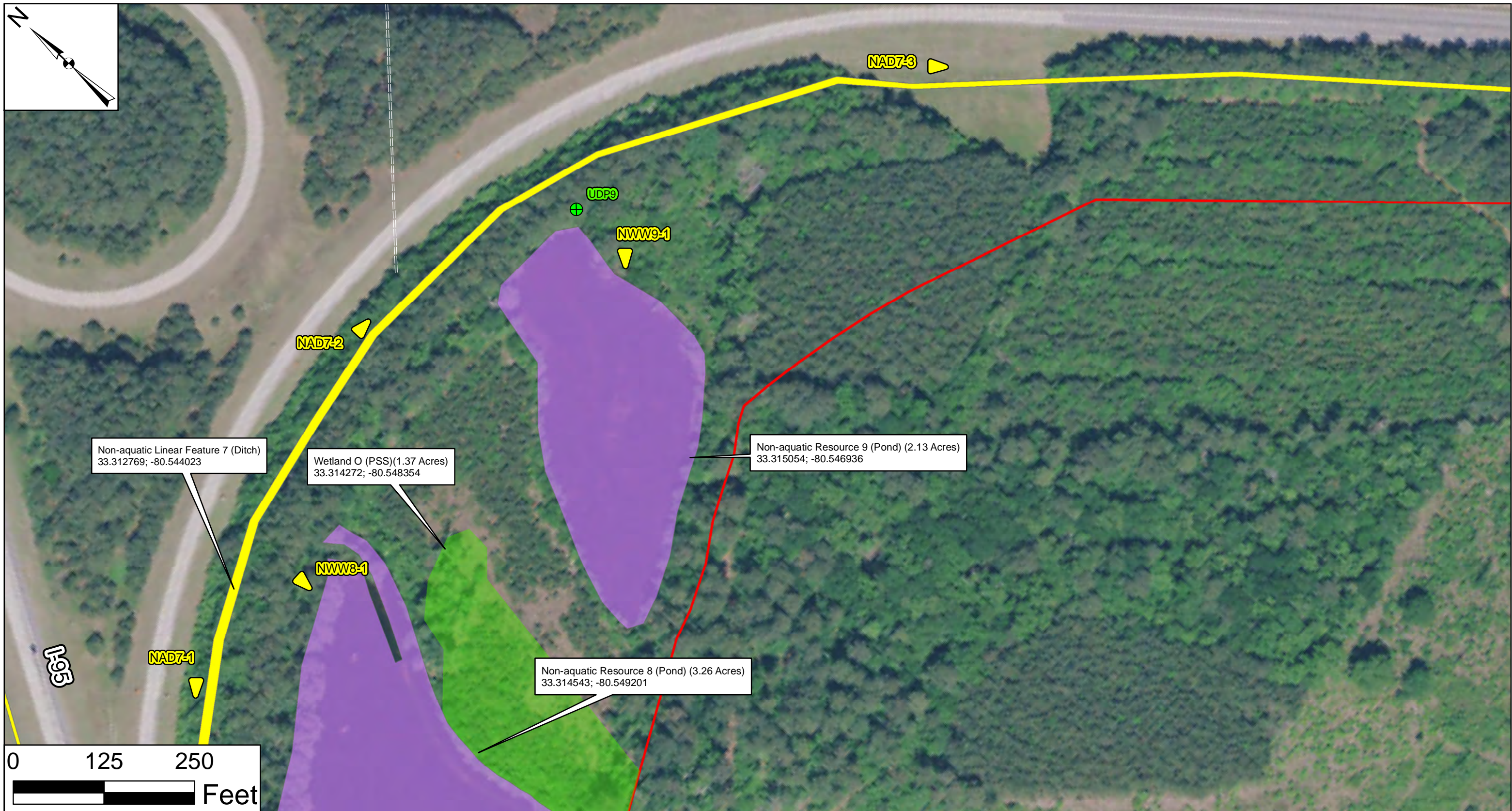
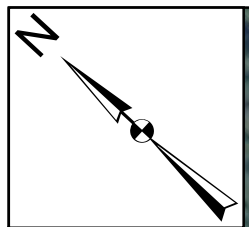
**Legend**

-  Data Point
-  Photo Point
-  Pipe
-  Wetland
-  Non-aquatic Linear Feature (Ditch)
-  Project Study Area (483.39 Acres)



I-26 and I-95 Interchange Improvement Orangeburg and Dorchester Counties SCDOT P038677		
Source: USDA Orthoimagery  2021	<b>AQUATIC RESOURCES</b>  Drawn By: RHH QA/QC: KLM April 2023	Figure 5  Page 28 of 33



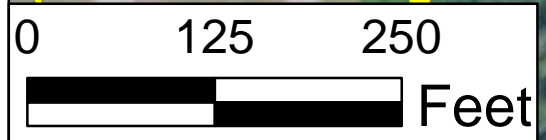


Non-aquatic Linear Feature 7 (Ditch)  
33.312769; -80.544023

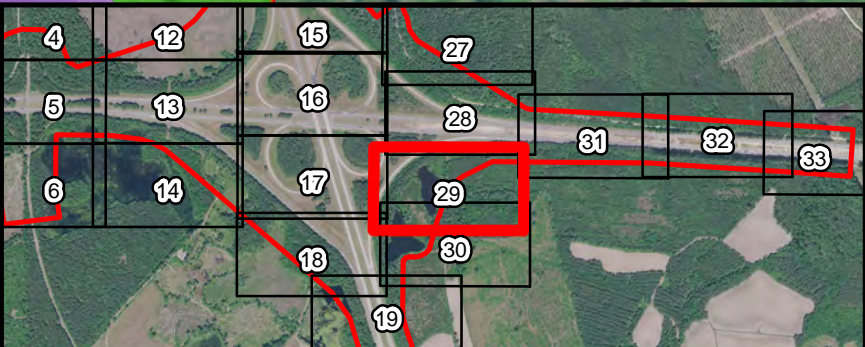
Wetland O (PSS)(1.37 Acres)  
33.314272; -80.548354

Non-aquatic Resource 9 (Pond) (2.13 Acres)  
33.315054; -80.546936

Non-aquatic Resource 8 (Pond) (3.26 Acres)  
33.314543; -80.549201



- Legend**
- Data Point
  - Photo Point
  - Pipe
  - Wetland
  - Non-aquatic Resource (Pond)
  - Non-aquatic Linear Feature (Ditch)
  - Project Study Area (483.39 Acres)



I-26 and I-95 Interchange Improvement  
Orangeburg and Dorchester Counties  
SCDOT P038677

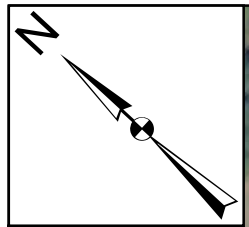
Source:  
USDA Orthoimagery  
2021

**AQUATIC RESOURCES**

Drawn By: RHH  
QA/QC: KLM  
April 2023

Figure 5  
Page 29 of 33





Wetland O (PSS)(1.37 Acres)  
33.314272; -80.548354

Non-aquatic Resource 9 (Pond) (2.13 Acres)  
33.315054; -80.546936

Non-aquatic Resource 8 (Pond) (3.26 Acres)  
33.314543; -80.549201

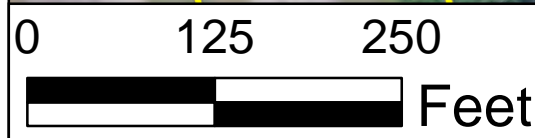
NWW3-1

NAD7-1

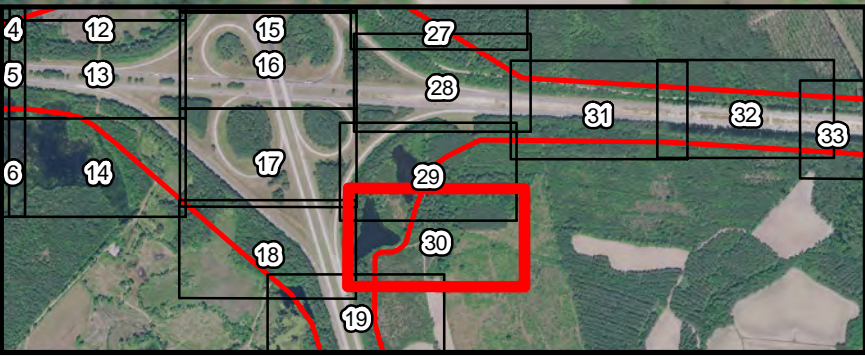
UDF8

Non-aquatic Linear Feature 7 (Ditch)  
33.312769; -80.544023

I-95



Legend	
	Pipe
	Photo Point
	Data Point
	Wetland
	Non-aquatic Resource (Pond)
	Non-aquatic Linear Feature (Ditch)
	Project Study Area (483.39 Acres)



I-26 and I-95 Interchange Improvement  
Orangeburg and Dorchester Counties  
SCDOT P038677

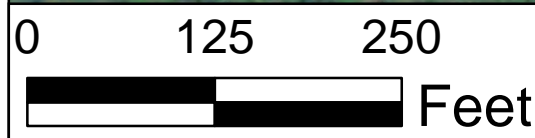
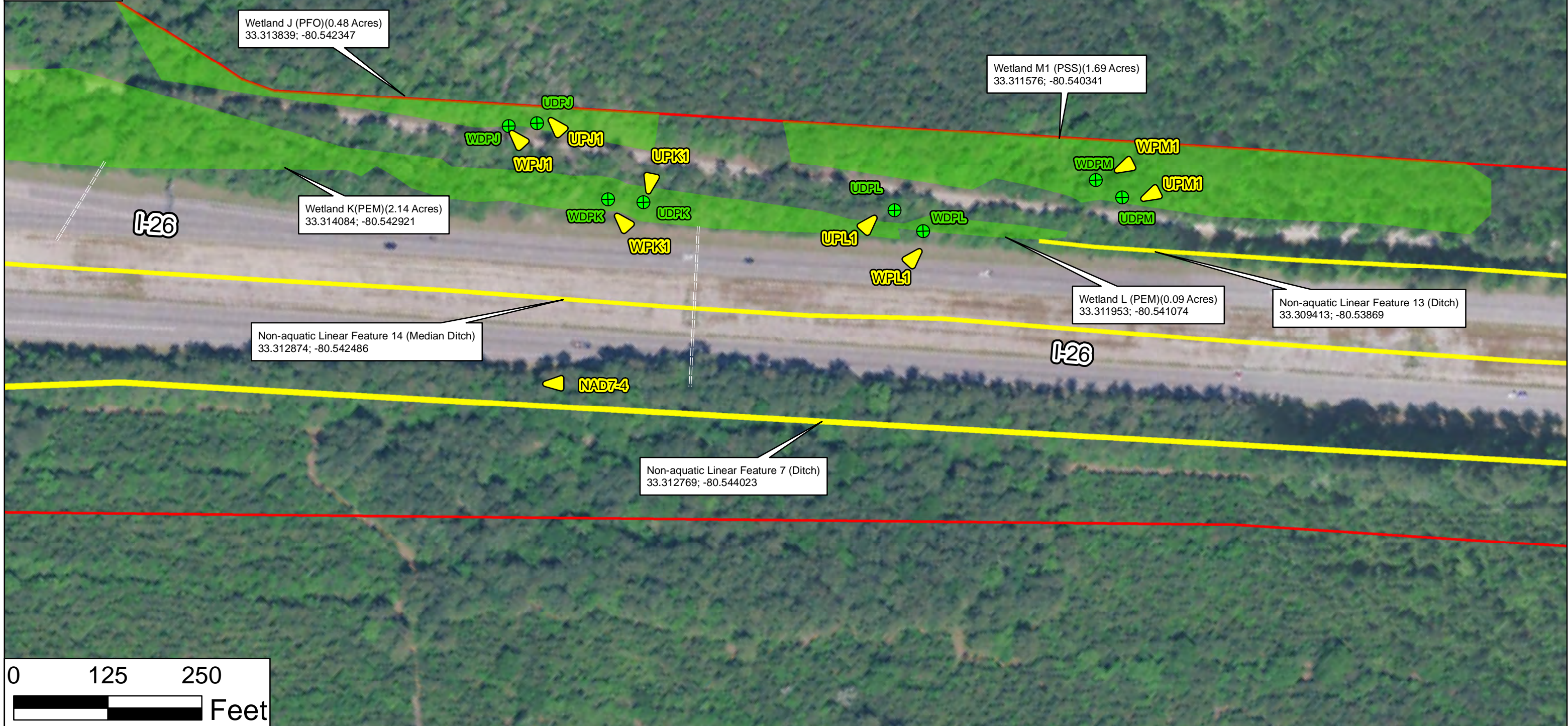
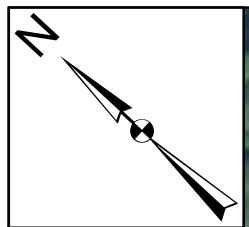
Source:  
USDA Orthoimagery  
2021

### AQUATIC RESOURCES

Drawn By: RHH  
QA/QC: KLM  
April 2023

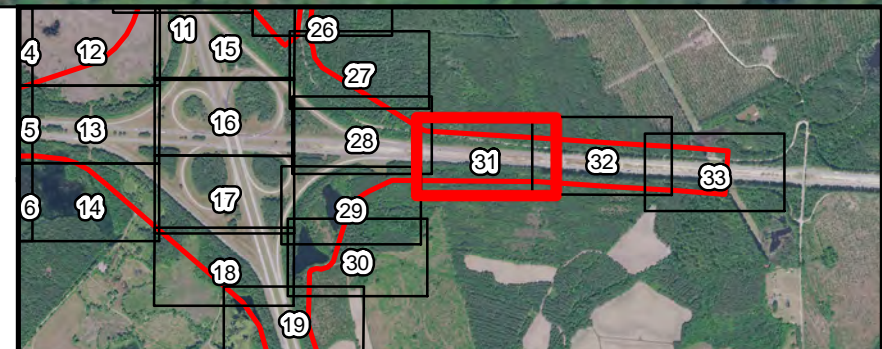
Figure 5  
Page 30 of 33





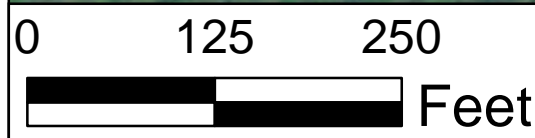
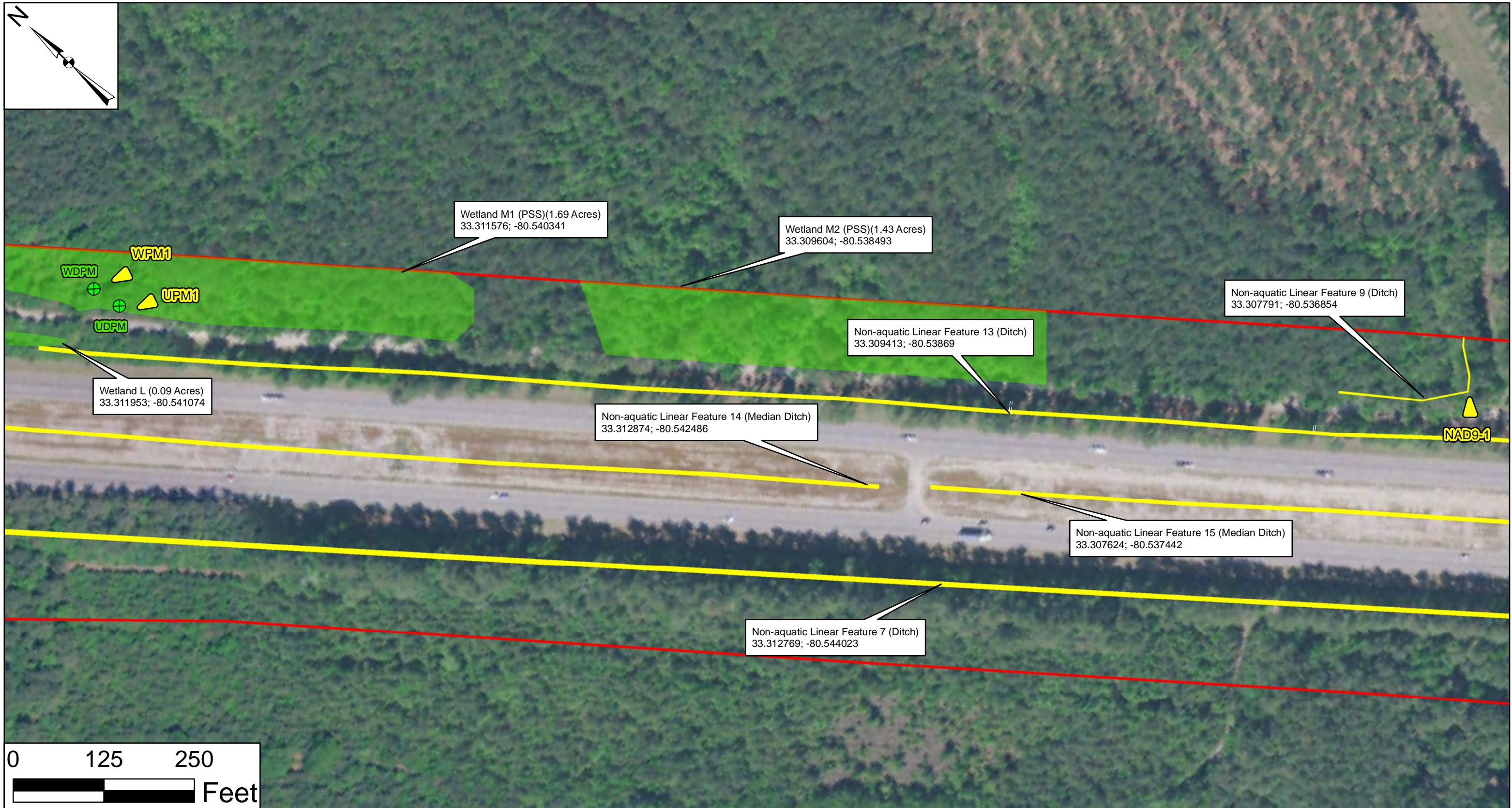
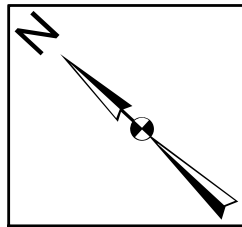
**Legend**

- Photo Point
- Data Point
- Pipe
- Wetland
- Non-aquatic Linear Feature (Ditch)
- Project Study Area (483.39 Acres)



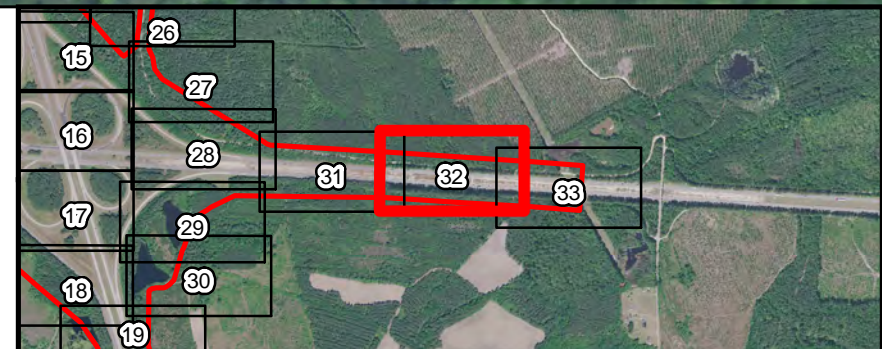
I-26 and I-95 Interchange Improvement Orangeburg and Dorchester Counties SCDOT P038677		
Source: USDA Orthoimagery 2021	<b>AQUATIC RESOURCES</b>  Drawn By: RHH QA/QC: KLM April 2023	Figure 5 Page 31 of 33





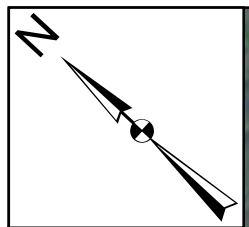
**Legend**

- Photo Point
- Data Point
- Pipe
- Wetland
- Non-aquatic Linear Feature (Ditch)
- Project Study Area (483.39 Acres)



I-26 and I-95 Interchange Improvement Orangeburg and Dorchester Counties SCDOT P038677		
Source: USDA Orthoimagery 2021	<b>AQUATIC RESOURCES</b>  Drawn By: RHH QA/QC: KLM April 2023	Figure 5 Page 32 of 33





Wetland M2 (PSS)(1.43 Acres)  
33.309604; -80.538493

Non-aquatic Linear Feature 9 (Ditch)  
33.307791 -80.536854

Wetland N (PEM)(0.12 Acres)  
33.307165; -80.536015

Non-aquatic Linear Feature 13 (Ditch)  
33.309413; -80.53869

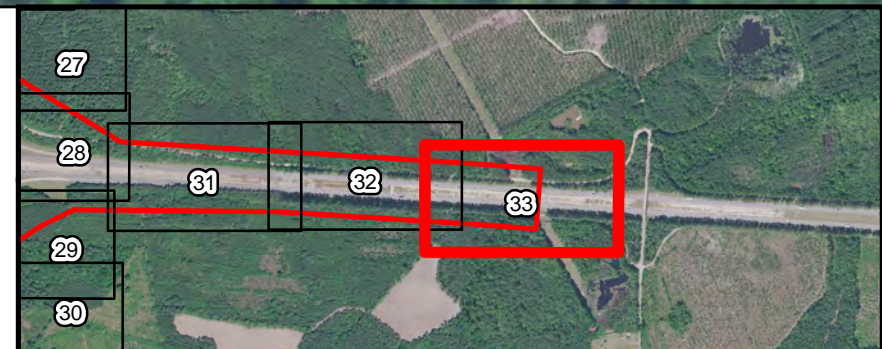
Non-aquatic Linear Feature 15 (Median Ditch)  
33.307624; -80.537442

Non-aquatic Linear Feature 7 (Ditch)  
33.312769; -80.544023

I-26



- Legend**
- Photo Point
  - Data Point
  - Wetland
  - Pipe
  - Non-aquatic Linear Feature (Ditch)
  - Project Study Area (483.39 Acres)



I-26 and I-95 Interchange Improvement  
Orangeburg and Dorchester Counties  
SCDOT P038677

Source:  
USDA Orthoimagery  
2021

**AQUATIC RESOURCES**  
  
Drawn By: RHH  
QA/QC: KLM  
April 2023

Figure 5  
Page 33 of 33